

Product datasheet for **TA600319**

Dystrobrevin alpha (DTNA) Mouse Monoclonal Capture Antibody [Clone ID: OTI1B2]

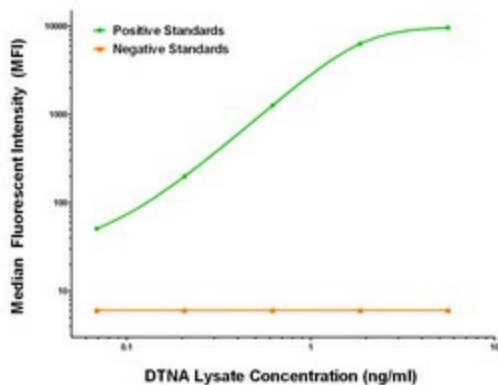
Product data:

| | |
|-----------------------|---|
| Product Type: | Primary Antibodies |
| Clone Name: | OTI1B2 |
| Applications: | LMNX |
| Recommended Dilution: | 1:100 - 1:1000 |
| Reactivity: | Human, Mouse, Rat |
| Host: | Mouse |
| Isotype: | IgG1 |
| Clonality: | Monoclonal |
| Immunogen: | Full length human recombinant protein of human DTNA (NM_032980) produced in HEK293T cell. |
| Formulation: | Stored in PBS (pH 7.4) containing 0.05% sodium azide and up to 5% trehalose |
| Concentration: | 0.5 mg/ml |
| Conjugation: | Unconjugated |
| Storage: | Store at -20°C. Avoid repeat freeze/thaw cycles. |
| Stability: | Stable for 12 months from date of receipt. |
| Gene Name: | dystrobrevin alpha |
| Database Link: | NP_116762 Entrez Gene 1837 Human Q9Y4J8 |
| Synonyms: | D18S892E; DRP3; DTN; DTN-A; LVNC1 |
| Matched ELISA Pair: | TA700319 |
| Protein Families: | Druggable Genome |



[View online »](#)

Product images:



DTNA Luminex Elisa with 1B2 Capture (TA600319) and 1A2 Detection ([TA700319]) Antibodies. Substrate used: Recombinant Human DTNA ([LY409818])