

Product datasheet for **TA600311**

MRPS27 Mouse Monoclonal Capture Antibody [Clone ID: OTI3A8]

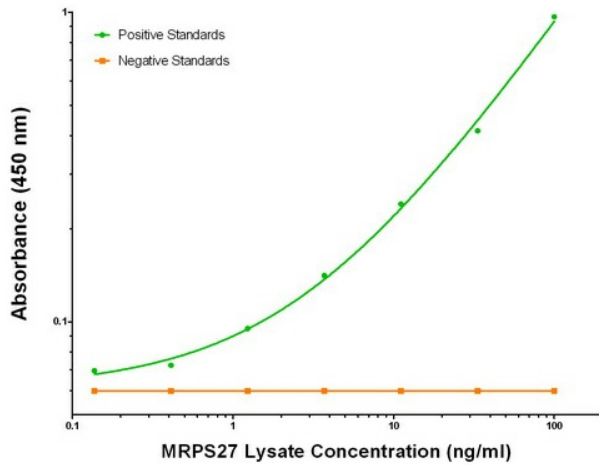
Product data:

Product Type:	Primary Antibodies
Clone Name:	OTI3A8
Applications:	ELISA, LMNX
Recommended Dilution:	1:100 - 1:1000
Reactivity:	Human
Host:	Mouse
Isotype:	IgG1
Clonality:	Monoclonal
Immunogen:	Full length human recombinant protein of human MRPS27 (NM_015084) produced in HEK293T cell.
Formulation:	Stored in PBS (pH 7.4) containing 0.05% sodium azide and up to 5% trehalose
Concentration:	0.5 mg/ml
Conjugation:	Unconjugated
Storage:	Store at -20°C. Avoid repeat freeze/thaw cycles.
Stability:	Stable for 12 months from date of receipt.
Gene Name:	mitochondrial ribosomal protein S27
Database Link:	NP_055899 Entrez Gene 23107 Human Q92552
Synonyms:	MRP-S27; S27mt
Matched ELISA Pair:	TA700312

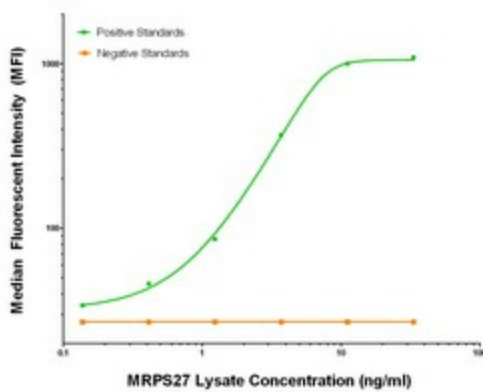


[View online »](#)

Product images:



MRPS27 Elisa with 3A8 Capture (TA600311) and 6E5 Detection ([TA700312]) Antibodies. Substrate used: Recombinant Human MRPS27 ([LY402416])



MRPS27 Luminex Elisa with 3A8 Capture (TA600311) and 6E5 Detection ([TA700312]) Antibodies. Substrate used: Recombinant Human MRPS27 ([LY402416])