

Product datasheet for **TA600309**

CDC2L1 (CDK11B) Mouse Monoclonal Capture Antibody [Clone ID: OTI1C5]

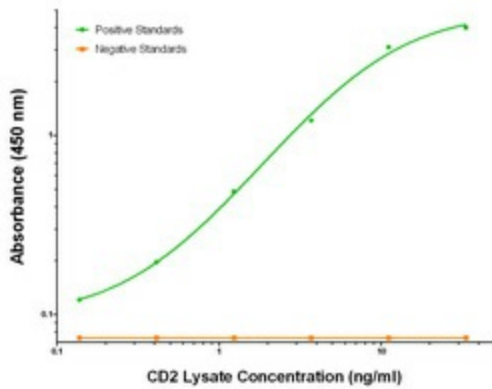
Product data:

Product Type:	Primary Antibodies
Clone Name:	OTI1C5
Applications:	ELISA, LMNX
Recommended Dilution:	1:100 - 1:1000
Reactivity:	Human
Host:	Mouse
Isotype:	IgG1
Clonality:	Monoclonal
Immunogen:	Full length human recombinant protein of human CD2 (NM_001767) produced in HEK293T cell.
Formulation:	Stored in PBS (pH 7.4) containing 0.05% sodium azide and up to 5% trehalose
Concentration:	0.5 mg/ml
Conjugation:	Unconjugated
Storage:	Store at -20°C. Avoid repeat freeze/thaw cycles.
Stability:	Stable for 12 months from date of receipt.
Gene Name:	cyclin dependent kinase 11B
Database Link:	NP_001778 Entrez Gene 984 Human P21127
Synonyms:	CDC2L1; CDK11; CDK11-p46; CDK11-p58; CDK11-p110; CLK-1; p58; p58CDC2L1; p58CLK-1; PITSLREA
Matched ELISA Pair:	TA700050
Protein Families:	Druggable Genome, Transcription Factors

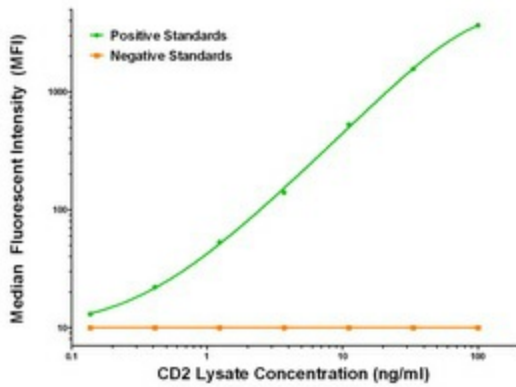


[View online »](#)

Product images:



CD2 Elisa with 1C5 Capture (TA600309) and Anti-Tag 1B12 Detection ([TA700050]) Antibodies. Substrate used: Recombinant Human CD2 ([LY400671])



CD2 Luminex Elisa with 1C5 Capture (TA600309) and Anti-Tag 1B12 Detection ([TA700050]) Antibodies. Substrate used: Recombinant Human CD2 ([LY400671])