

Product datasheet for **TA600308**

CBX8 Mouse Monoclonal Capture Antibody [Clone ID: OTI4H3]

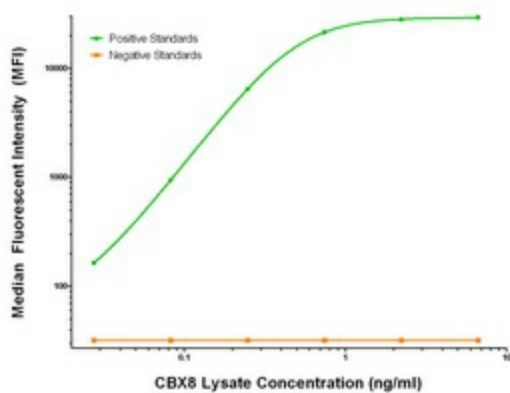
Product data:

Product Type:	Primary Antibodies
Clone Name:	OTI4H3
Applications:	LMNX
Recommended Dilution:	1:100 - 1:1000
Reactivity:	Human, Mouse, Rat
Host:	Mouse
Isotype:	IgG1
Clonality:	Monoclonal
Immunogen:	Full length human recombinant protein of human CBX8 (NM_020649) produced in HEK293T cell.
Formulation:	Stored in PBS (pH 7.4) containing 0.05% sodium azide and up to 5% trehalose
Concentration:	0.5 mg/ml
Conjugation:	Unconjugated
Storage:	Store at -20°C. Avoid repeat freeze/thaw cycles.
Stability:	Stable for 12 months from date of receipt.
Gene Name:	chromobox 8
Database Link:	NP_065700 Entrez Gene 30951 Mouse Entrez Gene 303731 Rat Entrez Gene 57332 Human Q9HC52
Synonyms:	PC3; RC1
Matched ELISA Pair:	TA700304
Protein Families:	Transcription Factors



[View online »](#)

Product images:



CBX8 Luminex Elisa with 4H3 Capture (TA600308) and 6D9 Detection ([TA700304]) Antibodies. Substrate used: Recombinant Human CBX8 ([LY412158])