

## Product datasheet for **TA600305**

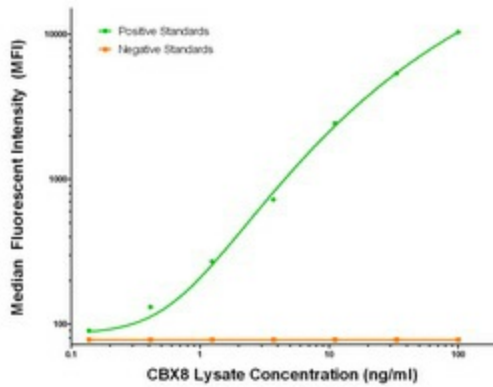
### CBX8 Mouse Monoclonal Capture Antibody [Clone ID: OTI5F3]

#### Product data:

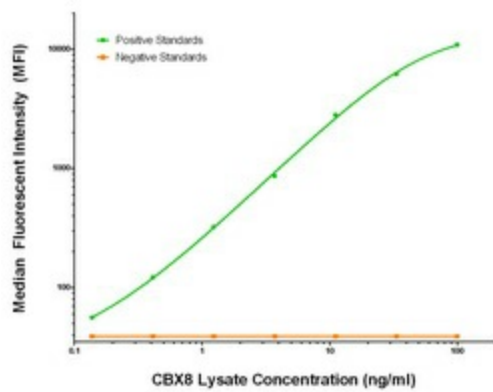
|                       |   |
|-----------------------|---|
| Product Type:         | Primary Antibodies  |
| Clone Name:           | OTI5F3  |
| Applications:         | LMNX  |
| Recommended Dilution: | 1:100 - 1:1000  |
| Reactivity:           | Human, Mouse, Rat   |
| Host:                 | Mouse   |
| Isotype:              | IgG1  |
| Clonality:            | Monoclonal  |
| Immunogen:            | Full length human recombinant protein of human CBX8 (NM_020649) produced in HEK293T cell.   |
| Formulation:          | Stored in PBS (pH 7.4) containing 0.05% sodium azide and up to 5% trehalose   |
| Concentration:        | 0.5 mg/ml   |
| Conjugation:          | Unconjugated  |
| Storage:              | Store at -20°C.<br>Avoid repeat freeze/thaw cycles.   |
| Stability:            | Stable for 12 months from date of receipt.  |
| Gene Name:            | chromobox 8   |
| Database Link:        | <a href="#">NP_065700</a><br><a href="#">Entrez Gene 30951 Mouse</a> <a href="#">Entrez Gene 303731 Rat</a> <a href="#">Entrez Gene 57332 Human</a><br><a href="#">Q9HC52</a> |
| Synonyms:             | PC3; RC1  |
| Matched ELISA Pair:   | TA700302  |
| Protein Families:     | Transcription Factors   |



[View online »](#)

**Product images:**


CBX8 Luminex Elisa with 5F3 Capture (TA600305) and 2A5 Detection ([TA700302]) Antibodies. Substrate used: Recombinant Human CBX8 ([LY412158])



CBX8 Luminex Elisa with 5F3 Capture (TA600305) and 3D1 Detection ([TA700303]) Antibodies. Substrate used: Recombinant Human CBX8 ([LY412158])