

## Product datasheet for **TA600302**

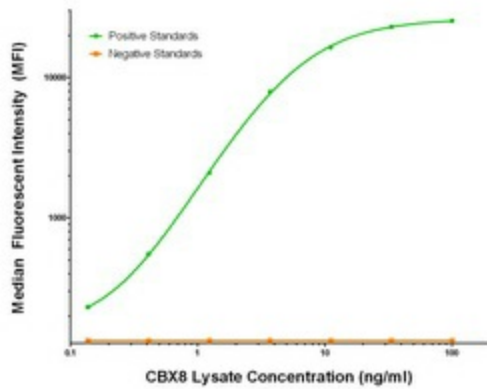
### CBX8 Mouse Monoclonal Capture Antibody [Clone ID: OTI1C7]

#### Product data:

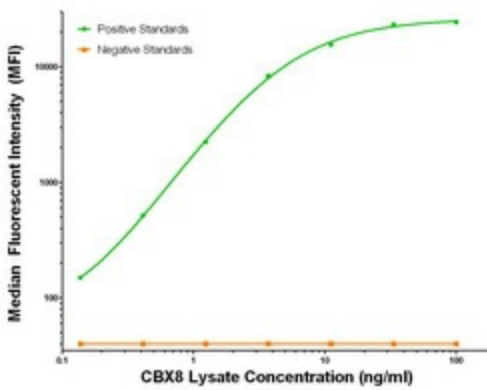
Product Type:	Primary Antibodies
Clone Name:	OTI1C7
Applications:	LMNX
Recommended Dilution:	1:100 - 1:1000
Reactivity:	Human, Mouse, Rat
Host:	Mouse
Isotype:	IgG1
Clonality:	Monoclonal
Immunogen:	Full length human recombinant protein of human CBX8 (NM_020649) produced in HEK293T cell.
Formulation:	Stored in PBS (pH 7.4) containing 0.05% sodium azide and up to 5% trehalose
Concentration:	0.5 mg/ml
Conjugation:	Unconjugated
Storage:	Store at -20°C. Avoid repeat freeze/thaw cycles.
Stability:	Stable for 12 months from date of receipt.
Gene Name:	chromobox 8
Database Link:	<a href="#">NP_065700</a> <a href="#">Entrez Gene 30951 Mouse</a> <a href="#">Entrez Gene 303731 Rat</a> <a href="#">Entrez Gene 57332 Human</a> <a href="#">Q9HC52</a>
Synonyms:	PC3; RC1
Matched ELISA Pair:	TA700302, TA700303
Protein Families:	Transcription Factors



[View online »](#)

**Product images:**


CBX8 Luminex Elisa with 1C7 Capture (TA600302) and 2A5 Detection ([TA700302]) Antibodies. Substrate used: Recombinant Human CBX8 ([LY412158])



CBX8 Luminex Elisa with 1C7 Capture (TA600302) and 3D1 Detection ([TA700303]) Antibodies. Substrate used: Recombinant Human CBX8 ([LY412158])