

Product datasheet for **TA600288**

Dystrobrevin beta (DTNB) Mouse Monoclonal Capture Antibody [Clone ID: OTI2E4]

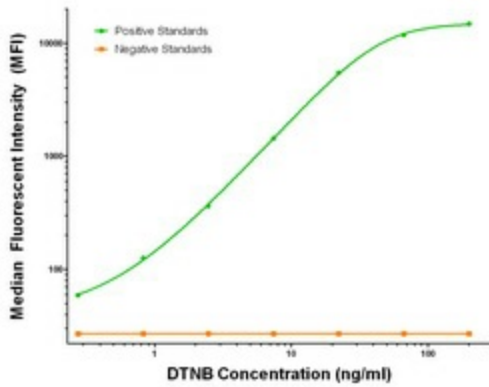
Product data:

Product Type:	Primary Antibodies
Clone Name:	OTI2E4
Applications:	LMNX
Recommended Dilution:	1:100 - 1:1000
Reactivity:	Human, Mouse, Rat
Host:	Mouse
Isotype:	IgG1
Clonality:	Monoclonal
Immunogen:	Full length human recombinant protein of human DTNB (NM_183361) produced in HEK293T cell.
Formulation:	Stored in PBS (pH 7.4) containing 0.05% sodium azide and up to 5% trehalose
Concentration:	0.5 mg/ml
Conjugation:	Unconjugated
Storage:	Store at -20°C. Avoid repeat freeze/thaw cycles.
Stability:	Stable for 12 months from date of receipt.
Gene Name:	dystrobrevin beta
Database Link:	NP_899205 Entrez Gene 13528 Mouse Entrez Gene 362715 Rat Entrez Gene 1838 Human O60941
Synonyms:	MGC17163; MGC57126
Matched ELISA Pair:	TA700287, TA700288, TA700289

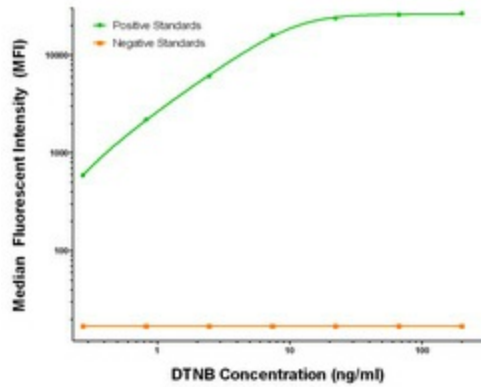


[View online »](#)

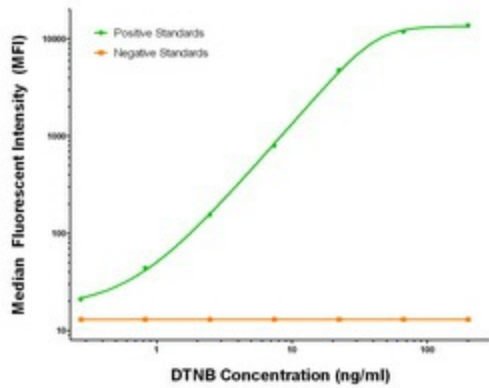
Product images:



DTNB Luminex Elisa with 2E4 Capture (TA600288) and 3C11 Detection ([TA700288]) Antibodies. Substrate used: Recombinant Human DTNB ([TP303798])



DTNB Luminex Elisa with 2E4 Capture (TA600288) and 3H8 Detection ([TA700287]) Antibodies. Substrate used: Recombinant Human DTNB ([TP303798])



DTNB Luminex Elisa with 2E4 Capture (TA600288) and 2E3 Detection ([TA700289]) Antibodies. Substrate used: Recombinant Human DTNB ([TP303798])