

## Product datasheet for **TA600285**

### CD22 Mouse Monoclonal Capture Antibody [Clone ID: OTI1E9]

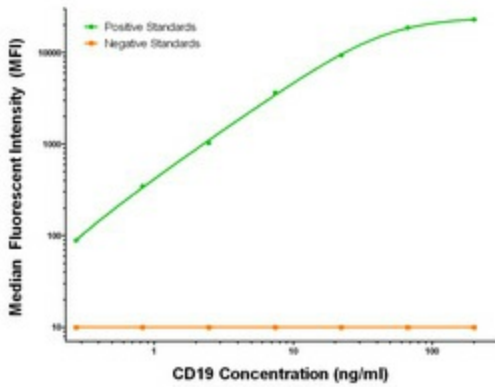
#### Product data:

Product Type:	Primary Antibodies
Clone Name:	OTI1E9
Applications:	LMNX
Recommended Dilution:	1:100 - 1:1000
Reactivity:	Human
Host:	Mouse
Isotype:	IgG1
Clonality:	Monoclonal
Immunogen:	Full length human recombinant protein of human CD19 (NM_001770) produced in HEK293T cell.
Formulation:	Stored in PBS (pH 7.4) containing 0.05% sodium azide and up to 5% trehalose
Concentration:	0.5 mg/ml
Conjugation:	Unconjugated
Storage:	Store at -20°C. Avoid repeat freeze/thaw cycles.
Stability:	Stable for 12 months from date of receipt.
Gene Name:	CD22 molecule
Database Link:	<a href="#">NP_001762</a> <a href="#">Entrez Gene 933 Human</a> <a href="#">P20273</a>
Synonyms:	SIGLEC-2; SIGLEC2
Matched ELISA Pair:	TA700285, TA700295
Protein Families:	Druggable Genome, Transmembrane
Protein Pathways:	B cell receptor signaling pathway, Cell adhesion molecules (CAMs), Hematopoietic cell lineage

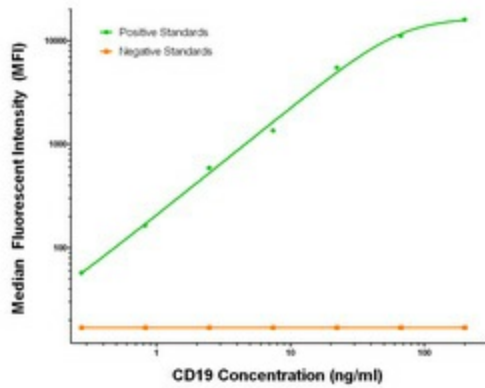


[View online »](#)

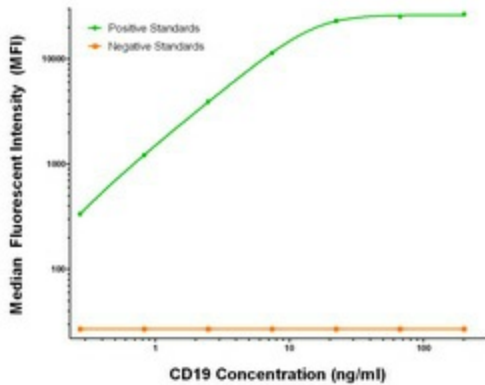
Product images:



CD19 Luminex Elisa with 1E9 Capture (TA600285) and 3G7 Detection ([TA700295]) Antibodies. Substrate used: Recombinant Human CD19 ([TP302922])



CD19 Luminex Elisa with 1E9 Capture (TA600285) and 2G7 Detection ([TA700285]) Antibodies. Substrate used: Recombinant Human CD19 ([TP302922])



CD19 Luminex Elisa with 1E9 Capture (TA600285) and 2D3 Detection ([TA700286]) Antibodies. Substrate used: Recombinant Human CD19 ([TP302922])