

## Product datasheet for **TA600277**

### CD4 Mouse Monoclonal Capture Antibody [Clone ID: OTI6B7]

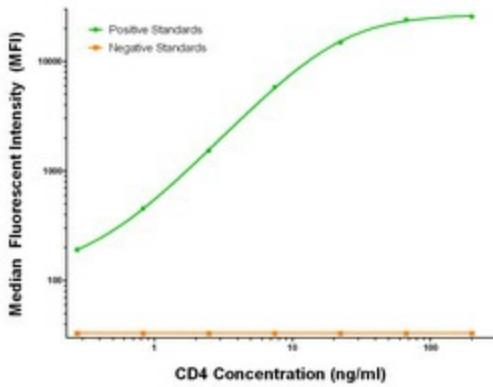
#### Product data:

Product Type:	Primary Antibodies
Clone Name:	OTI6B7
Applications:	LMNX
Recommended Dilution:	1:100 - 1:1000
Reactivity:	Human
Host:	Mouse
Isotype:	IgG1
Clonality:	Monoclonal
Immunogen:	Full length human recombinant protein of human CD4 (NM_000616) produced in HEK293T cell.
Formulation:	Stored in PBS (pH 7.4) containing 0.05% sodium azide and up to 5% trehalose
Concentration:	0.5 mg/ml
Conjugation:	Unconjugated
Storage:	Store at -20°C. Avoid repeat freeze/thaw cycles.
Stability:	Stable for 12 months from date of receipt.
Gene Name:	CD4 molecule
Database Link:	<a href="#">NP_000607</a> <a href="#">Entrez Gene 920 Human P01730</a>
Synonyms:	CD4mut; IMD79; OKT4D
Matched ELISA Pair:	TA700277, TA700298, TA700300
Protein Families:	Adult stem cells, Druggable Genome, ES Cell Differentiation/IPS, Induced pluripotent stem cells, Transmembrane
Protein Pathways:	Antigen processing and presentation, Cell adhesion molecules (CAMs), Hematopoietic cell lineage, Primary immunodeficiency, T cell receptor signaling pathway

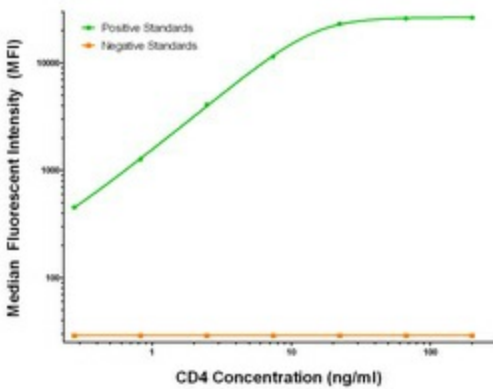


[View online »](#)

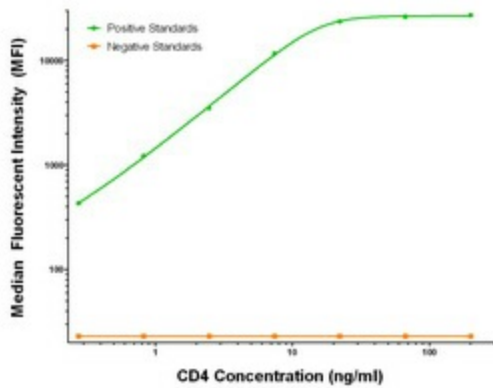
Product images:



CD4 Luminex Elisa with 6B7 Capture (TA600277) and 2D4 Detection ([TA700277]) Antibodies. Substrate used: Recombinant Human CD4 ([TP306453])



CD4 Luminex Elisa with 6B7 Capture (TA600277) and 7F2 Detection ([TA700298]) Antibodies. Substrate used: Recombinant Human CD4 ([TP306453])



CD4 Luminex Elisa with 6B7 Capture (TA600277) and 5D9 Detection ([TA700300]) Antibodies. Substrate used: Recombinant Human CD4 ([TP306453])