

Product datasheet for **TA600276**

DPP3 Mouse Monoclonal Capture Antibody [Clone ID: OTI2G8]

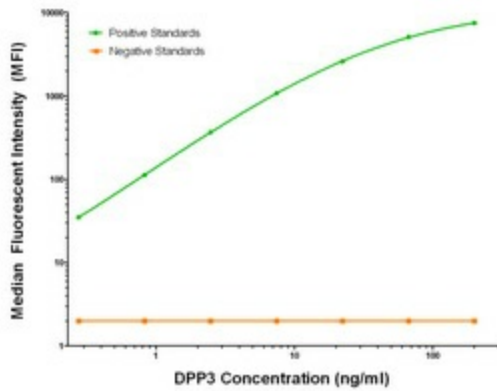
Product data:

Product Type:	Primary Antibodies
Clone Name:	OTI2G8
Applications:	LMNX
Recommended Dilution:	1:100 - 1:1000
Reactivity:	Human, Mouse, Rat
Host:	Mouse
Isotype:	IgG1
Clonality:	Monoclonal
Immunogen:	Full length human recombinant protein of human DPP3 (NM_005700) produced in HEK293T cell.
Formulation:	Stored in PBS (pH 7.4) containing 0.05% sodium azide and up to 5% trehalose
Concentration:	0.5 mg/ml
Conjugation:	Unconjugated
Storage:	Store at -20°C. Avoid repeat freeze/thaw cycles.
Stability:	Stable for 12 months from date of receipt.
Gene Name:	dipeptidyl peptidase 3
Database Link:	NP_005691 Entrez Gene 75221 Mouse Entrez Gene 10072 Human Q9NY33
Synonyms:	DPPIII
Matched ELISA Pair:	TA700273
Protein Families:	Druggable Genome, Protease

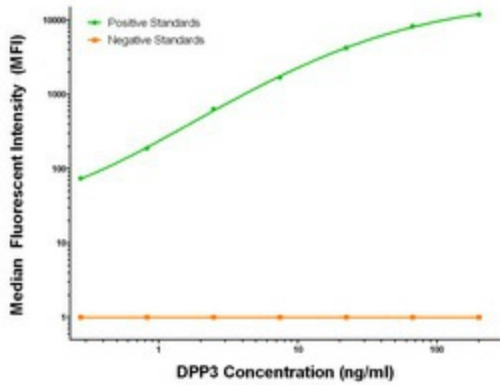


[View online »](#)

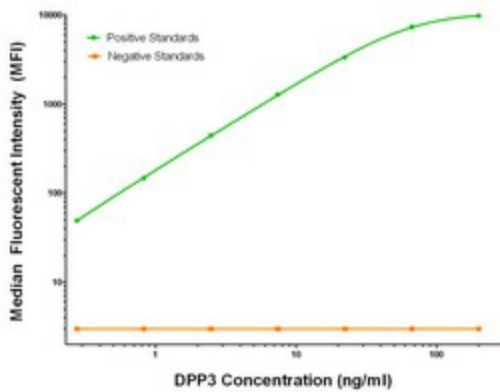
Product images:



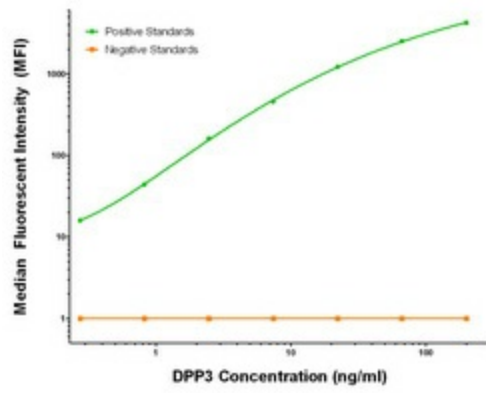
DPP3 Luminex Elisa with 2G8 Capture (TA600276) and 2D9 Detection ([TA700273]) Antibodies. Substrate used: Recombinant Human DPP3 ([TP319658])



DPP3 Luminex Elisa with 2G8 Capture (TA600276) and 2B12 Detection ([TA700274]) Antibodies. Substrate used: Recombinant Human DPP3 ([TP319658])



DPP3 Luminex Elisa with 2G8 Capture (TA600276) and 2A8 Detection ([TA700275]) Antibodies. Substrate used: Recombinant Human DPP3 ([TP319658])



DPP3 Luminex Elisa with 2G8 Capture (TA600276) and 1C11 Detection ([TA700276]) Antibodies. Substrate used: Recombinant Human DPP3 ([TP319658])