

Product datasheet for **TA600272**

TLE 1 (TLE1) Mouse Monoclonal Capture Antibody [Clone ID: OTI4F4]

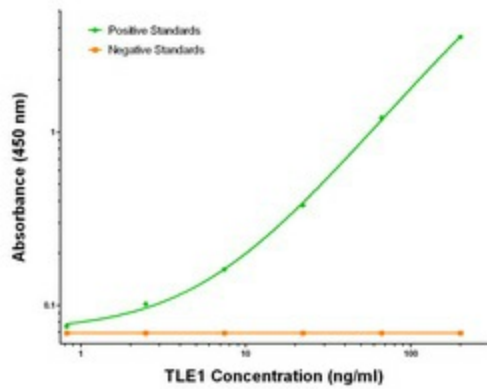
Product data:

| | |
|-----------------------|---|
| Product Type: | Primary Antibodies |
| Clone Name: | OTI4F4 |
| Applications: | ELISA, LMNX |
| Recommended Dilution: | 1:100 - 1:1000 |
| Reactivity: | Human, Mouse, Rat |
| Host: | Mouse |
| Isotype: | IgG1 |
| Clonality: | Monoclonal |
| Immunogen: | Full length human recombinant protein of human TLE1 (NM_005077) produced in HEK293T cell. |
| Formulation: | Stored in PBS (pH 7.4) containing 0.05% sodium azide and up to 5% trehalose |
| Concentration: | 0.5 mg/ml |
| Conjugation: | Unconjugated |
| Storage: | Store at -20°C. Avoid repeat freeze/thaw cycles. |
| Stability: | Stable for 12 months from date of receipt. |
| Gene Name: | TLE family member 1, transcriptional corepressor |
| Database Link: | NP_005068 Entrez Gene 21885 Mouse Entrez Gene 362533 Rat Entrez Gene 7088 Human Q04724 |
| Synonyms: | ESG; ESG1; GRG1 |
| Matched ELISA Pair: | TA700269 |
| Protein Families: | Transcription Factors |

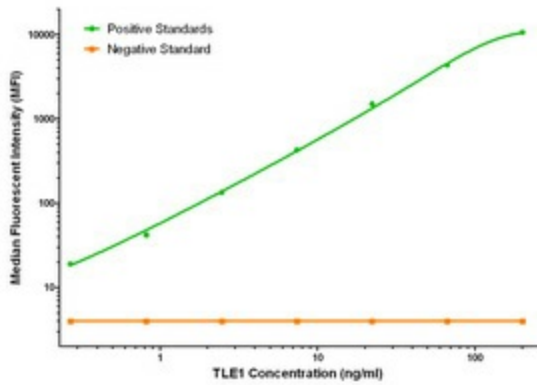


[View online »](#)

Product images:



TLE1 Elisa with 4F4 Capture (TA600272) and 2D8 Detection ([TA700269]) Antibodies. Substrate used: Recombinant Human TLE1 ([TP304037])



TLE1 Luminex Elisa with 4F4 Capture (TA600272) and 2D8 Detection ([TA700269]) Antibodies. Substrate used: Recombinant Human TLE1 ([TP304037])