

## Product datasheet for **TA600267**

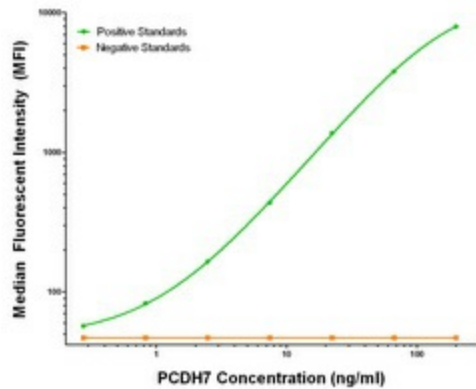
### PCDH7 Mouse Monoclonal Capture Antibody [Clone ID: OT11F9]

#### Product data:

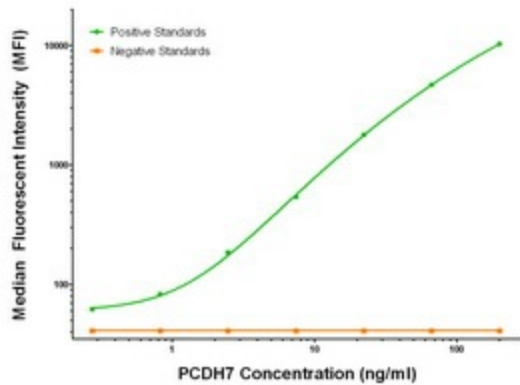
|                       |                                                                                                                                       |
|-----------------------|---------------------------------------------------------------------------------------------------------------------------------------|
| Product Type:         | Primary Antibodies                                                                                                                    |
| Clone Name:           | OT11F9                                                                                                                                |
| Applications:         | LMNX                                                                                                                                  |
| Recommended Dilution: | 1:100 - 1:1000                                                                                                                        |
| Reactivity:           | Human, Mouse, Rat                                                                                                                     |
| Host:                 | Mouse                                                                                                                                 |
| Isotype:              | IgG1                                                                                                                                  |
| Clonality:            | Monoclonal                                                                                                                            |
| Immunogen:            | Full length human recombinant protein of human PCDH7 (NM_032457) produced in HEK293T cell.                                            |
| Formulation:          | Stored in PBS (pH 7.4) containing 0.05% sodium azide and up to 5% trehalose                                                           |
| Concentration:        | 0.5 mg/ml                                                                                                                             |
| Conjugation:          | Unconjugated                                                                                                                          |
| Storage:              | Store at -20°C.<br>Avoid repeat freeze/thaw cycles.                                                                                   |
| Stability:            | Stable for 12 months from date of receipt.                                                                                            |
| Gene Name:            | protocadherin 7                                                                                                                       |
| Database Link:        | <a href="#">NP_115833</a><br><a href="#">Entrez Gene 54216 Mouse</a> <a href="#">Entrez Gene 5099 Human</a><br><a href="#">O60245</a> |
| Synonyms:             | BH-Pcdh; BHPCDH; PPP1R120                                                                                                             |
| Matched ELISA Pair:   | TA700265                                                                                                                              |
| Protein Families:     | Druggable Genome, Transmembrane                                                                                                       |


[View online »](#)

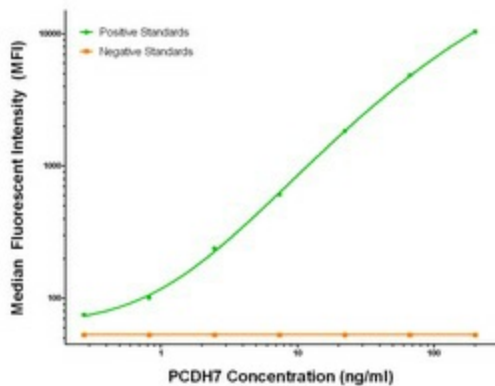
## Product images:



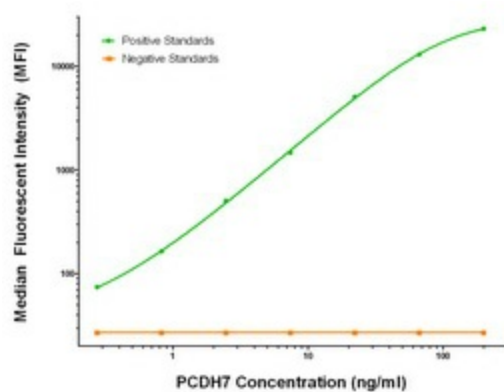
PCDH7 Luminex Elisa with 1F9 Capture (TA600267) and 1G8 Detection ([TA700291]) Antibodies. Substrate used: Recombinant Human PCDH7 ([TP323033])



PCDH7 Luminex Elisa with 1F9 Capture (TA600267) and 2G6 Detection ([TA700265]) Antibodies. Substrate used: Recombinant Human PCDH7 ([TP323033])



PCDH7 Luminex Elisa with 1F9 Capture (TA600267) and 3B7 Detection ([TA700290]) Antibodies. Substrate used: Recombinant Human PCDH7 ([TP323033])



PCDH7 Luminex Elisa with 1F9 Capture (TA600267) and 3C8 Detection ([TA700266]) Antibodies. Substrate used: Recombinant Human PCDH7 ([TP323033])