

Product datasheet for **TA600266**

PCDH7 Mouse Monoclonal Capture Antibody [Clone ID: OTI3C8]

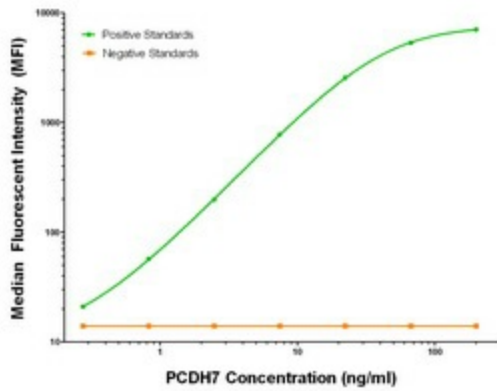
Product data:

Product Type:	Primary Antibodies
Clone Name:	OTI3C8
Applications:	LMNX
Recommended Dilution:	1:100 - 1:1000
Reactivity:	Human, Mouse, Rat
Host:	Mouse
Isotype:	IgG1
Clonality:	Monoclonal
Immunogen:	Full length human recombinant protein of human PCDH7 (NM_032457) produced in HEK293T cell.
Formulation:	Stored in PBS (pH 7.4) containing 0.05% sodium azide and up to 5% trehalose
Concentration:	0.5 mg/ml
Conjugation:	Unconjugated
Storage:	Store at -20°C. Avoid repeat freeze/thaw cycles.
Stability:	Stable for 12 months from date of receipt.
Gene Name:	protocadherin 7
Database Link:	NP_115833 Entrez Gene 54216 Mouse Entrez Gene 5099 Human O60245
Synonyms:	BH-Pcdh; BHPCDH; PPP1R120
Matched ELISA Pair:	TA700265, TA700267, TA700290, TA700291
Protein Families:	Druggable Genome, Transmembrane

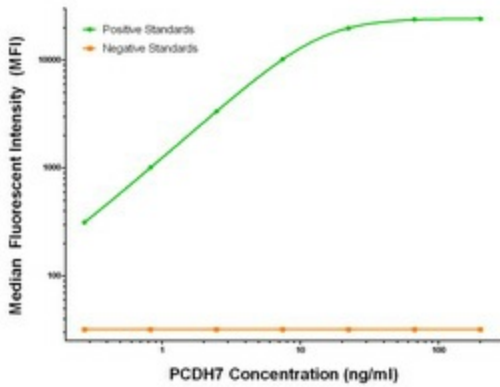


[View online »](#)

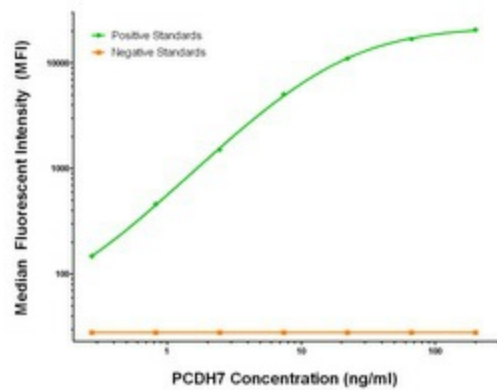
Product images:



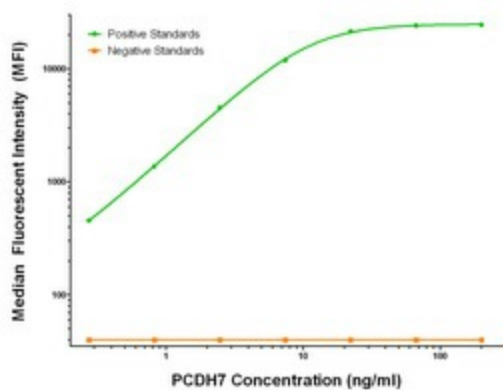
PCDH7 Luminex Elisa with 3C8 Capture (TA600266) and 1F7 Detection ([TA700267]) Antibodies. Substrate used: Recombinant Human PCDH7 ([TP323033])



PCDH7 Luminex Elisa with 3C8 Capture (TA600266) and 1G8 Detection ([TA700291]) Antibodies. Substrate used: Recombinant Human PCDH7 ([TP323033])



PCDH7 Luminex Elisa with 3C8 Capture (TA600266) and 2G6 Detection ([TA700265]) Antibodies. Substrate used: Recombinant Human PCDH7 ([TP323033])



PCDH7 Luminex Elisa with 3C8 Capture (TA600266) and 3B7 Detection ([TA700290]) Antibodies. Substrate used: Recombinant Human PCDH7 ([TP323033])