

## Product datasheet for **TA600259**

### Amyloid Precursor Protein (APP) Mouse Monoclonal Capture Antibody [Clone ID: OTI7B8]

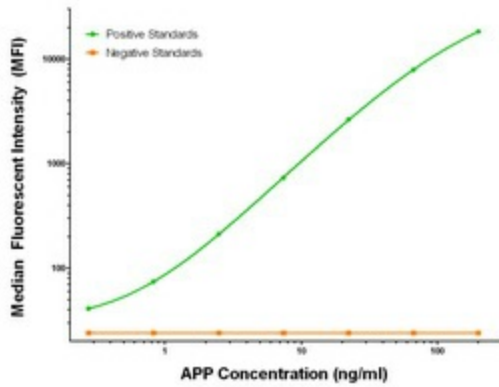
#### Product data:

Product Type:	Primary Antibodies
Clone Name:	OTI7B8
Applications:	LMNX
Recommended Dilution:	1:100 - 1:1000
Reactivity:	Human, Mouse, Rat
Host:	Mouse
Isotype:	IgG1
Clonality:	Monoclonal
Immunogen:	Full length human recombinant protein of human APP (NM_201413) produced in HEK293T cell.
Formulation:	Stored in PBS (pH 7.4) containing 0.05% sodium azide and up to 5% trehalose
Concentration:	0.5 mg/ml
Conjugation:	Unconjugated
Storage:	Store at -20°C. Avoid repeat freeze/thaw cycles.
Stability:	Stable for 12 months from date of receipt.
Gene Name:	amyloid beta precursor protein
Database Link:	<a href="#">NP_958816</a> <a href="#">Entrez Gene 11820 Mouse</a> <a href="#">Entrez Gene 54226 Rat</a> <a href="#">Entrez Gene 351 Human</a> <a href="#">P05067</a>
Synonyms:	AAA; ABETA; ABPP; AD1; APPI; CTFgamma; CVAP; PN-II; PN2
Matched ELISA Pair:	TA700050
Protein Families:	Druggable Genome, Transmembrane
Protein Pathways:	Alzheimer's disease



[View online »](#)

## Product images:



APP Luminex Elisa with 7B8 Capture (TA600259) and Anti-Tag 1B12 Detection ([TA700050]) Antibodies. Substrate used: Recombinant Human APP ([TP309575])