

## Product datasheet for **TA600253**

### Cystatin C (CST3) Mouse Monoclonal Capture Antibody [Clone ID: OTI1A6]

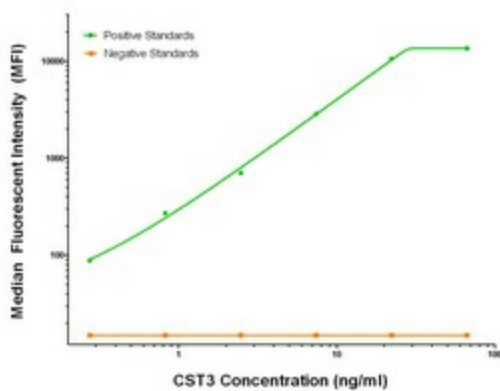
#### Product data:

Product Type:	Primary Antibodies
Clone Name:	OTI1A6
Applications:	LMNX
Recommended Dilution:	1:100 - 1:1000
Reactivity:	Human
Host:	Mouse
Isotype:	IgG1
Clonality:	Monoclonal
Immunogen:	Full length human recombinant protein of human CST3 (NM_000099) produced in HEK293T cell.
Formulation:	Stored in PBS (pH 7.4) containing 0.05% sodium azide and up to 5% trehalose
Concentration:	0.5 mg/ml
Conjugation:	Unconjugated
Storage:	Store at -20°C. Avoid repeat freeze/thaw cycles.
Stability:	Stable for 12 months from date of receipt.
Gene Name:	cystatin C
Database Link:	<a href="#">NP_000090</a> <a href="#">Entrez Gene 1471 Human</a> <a href="#">P01034</a>
Synonyms:	ARMD11; HEL-S-2
Matched ELISA Pair:	TA700050
Protein Families:	Druggable Genome, ES Cell Differentiation/IPS, Transmembrane



[View online »](#)

## Product images:



CST3 Luminex Elisa with 1A6 Capture (TA600253) and Anti-Tag 1B12 Detection ([TA700050]) Antibodies. Substrate used: Recombinant Human CST3 ([TP310730])