

Product datasheet for **TA600238**

TIMP2 Mouse Monoclonal Capture Antibody [Clone ID: OTI3G7]

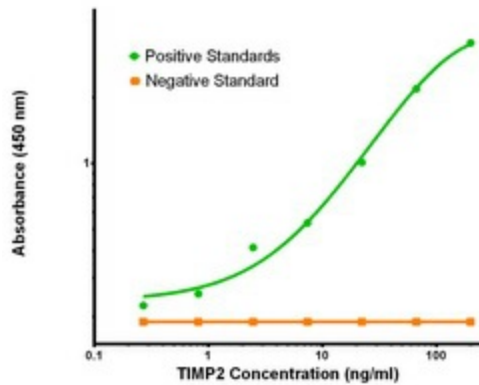
Product data:

Product Type:	Primary Antibodies
Clone Name:	OTI3G7
Applications:	ELISA, LMNX
Recommended Dilution:	1:100 - 1:1000
Reactivity:	Human, Mouse, Rat
Host:	Mouse
Isotype:	IgG1
Clonality:	Monoclonal
Immunogen:	Full length human recombinant protein of human TIMP2(NP_003246) produced in HEK293T cell.
Formulation:	Stored in PBS (pH 7.4) containing 0.05% sodium azide and up to 5% trehalose
Concentration:	0.5 mg/ml
Conjugation:	Unconjugated
Storage:	Store at -20°C. Avoid repeat freeze/thaw cycles.
Stability:	Stable for 12 months from date of receipt.
Gene Name:	TIMP metalloproteinase inhibitor 2
Database Link:	NP_003246 Entrez Gene 21858 Mouse Entrez Gene 29543 Rat Entrez Gene 7077 Human P16035
Synonyms:	CSC-21K; DDC8
Matched ELISA Pair:	TA700235
Protein Families:	Druggable Genome, Secreted Protein

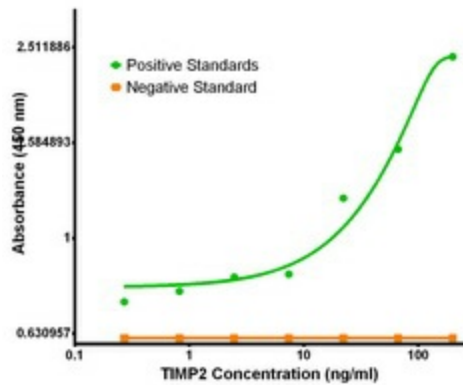


[View online »](#)

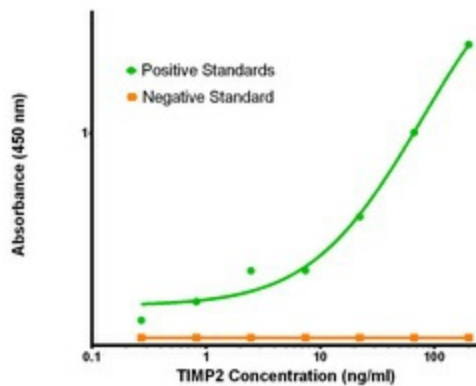
Product images:



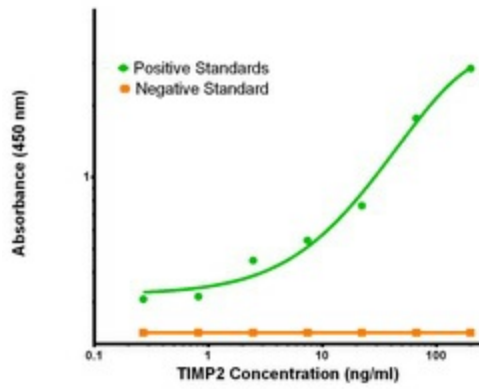
TIMP2 Elisa with 3G7 Capture (TA600238) and 1A6 Detection ([TA700243]) Antibodies. Substrate used: Recombinant Human TIMP2 ([TP309796])



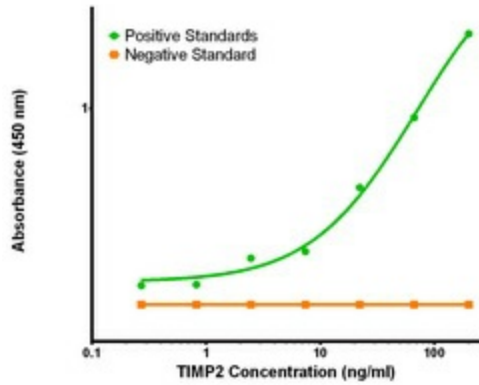
TIMP2 Elisa with 3G7 Capture (TA600238) and 2G7 Detection ([TA700235]) Antibodies. Substrate used: Recombinant Human TIMP2 ([TP309796])



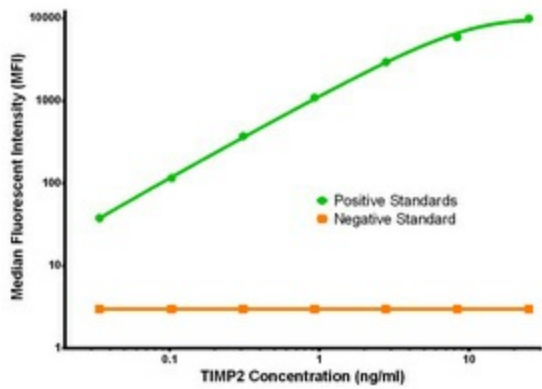
TIMP2 Elisa with 3G7 Capture (TA600238) and 3H8 Detection ([TA700236]) Antibodies. Substrate used: Recombinant Human TIMP2 ([TP309796])



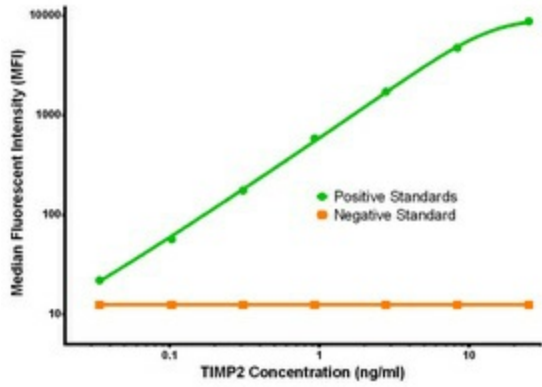
TIMP2 Elisa with 3G7 Capture (TA600238) and 1B11 Detection ([TA700237]) Antibodies. Substrate used: Recombinant Human TIMP2 ([TP309796])



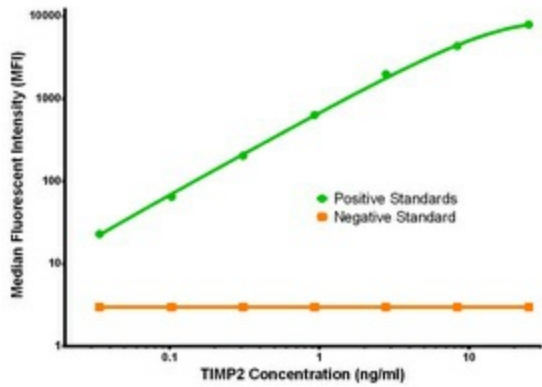
TIMP2 Elisa with 3G7 Capture (TA600238) and 1C4 Detection ([TA700242]) Antibodies. Substrate used: Recombinant Human TIMP2 ([TP309796])



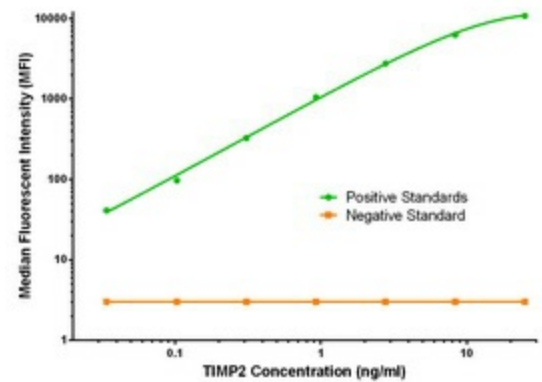
TIMP2 Luminex Elisa with 3G7 Capture (TA600238) and 1A6 Detection ([TA700243]) Antibodies. Substrate used: Recombinant Human TIMP2 ([TP309796])



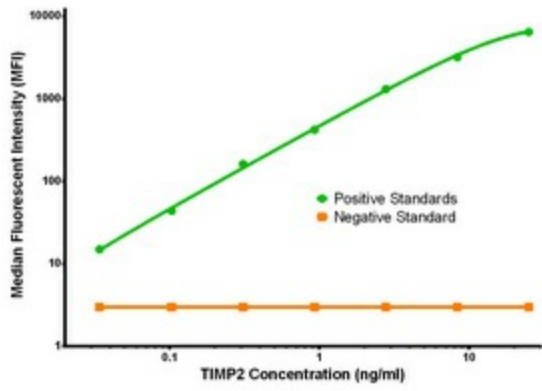
TIMP2 Luminex Elisa with 3G7 Capture (TA600238) and 2G7 Detection ([TA700235]) Antibodies. Substrate used: Recombinant Human TIMP2 ([TP309796])



TIMP2 Luminex Elisa with 3G7 Capture (TA600238) and 3H8 Detection ([TA700236]) Antibodies. Substrate used: Recombinant Human TIMP2 ([TP309796])



TIMP2 Luminex Elisa with 3G7 Capture (TA600238) and 1B11 Detection ([TA700237]) Antibodies. Substrate used: Recombinant Human TIMP2 ([TP309796])



TIMP2 Luminex Elisa with 3G7 Capture (TA600238) and 1C4 Detection ([TA700242]) Antibodies. Substrate used: Recombinant Human TIMP2 ([TP309796])