

## Product datasheet for **TA600235**

### **TIMP2 Mouse Monoclonal Capture Antibody [Clone ID: OTI1A6]**

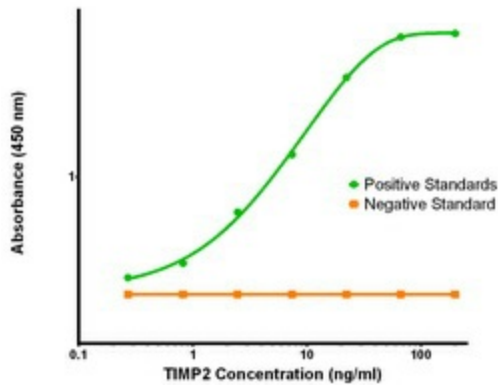
#### **Product data:**

|                       |   |
|-----------------------|---|
| Product Type:         | Primary Antibodies  |
| Clone Name:           | OTI1A6  |
| Applications:         | ELISA, LMNX   |
| Recommended Dilution: | 1:100 - 1:1000  |
| Reactivity:           | Human, Mouse, Rat   |
| Host:                 | Mouse   |
| Isotype:              | IgG1  |
| Clonality:            | Monoclonal  |
| Immunogen:            | Full length human recombinant protein of human TIMP2(NP_003246) produced in HEK293T cell.   |
| Formulation:          | Stored in PBS (pH 7.4) containing 0.05% sodium azide and up to 5% trehalose   |
| Concentration:        | 0.5 mg/ml   |
| Conjugation:          | Unconjugated  |
| Storage:              | Store at -20°C.<br>Avoid repeat freeze/thaw cycles.   |
| Stability:            | Stable for 12 months from date of receipt.  |
| Gene Name:            | TIMP metalloproteinase inhibitor 2  |
| Database Link:        | <a href="#">NP_003246</a><br><a href="#">Entrez Gene 21858 Mouse</a> <a href="#">Entrez Gene 29543 Rat</a> <a href="#">Entrez Gene 7077 Human</a><br><a href="#">P16035</a> |
| Synonyms:             | CSC-21K; DDC8   |
| Matched ELISA Pair:   | TA700235, TA700236, TA700237, TA700238, TA700242  |
| Protein Families:     | Druggable Genome, Secreted Protein  |

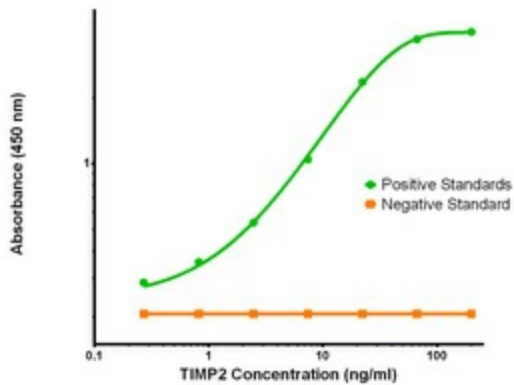


[View online »](#)

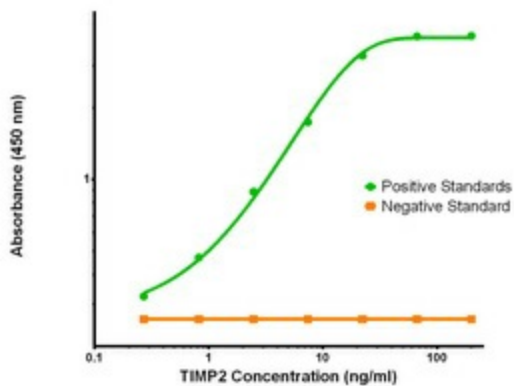
Product images:



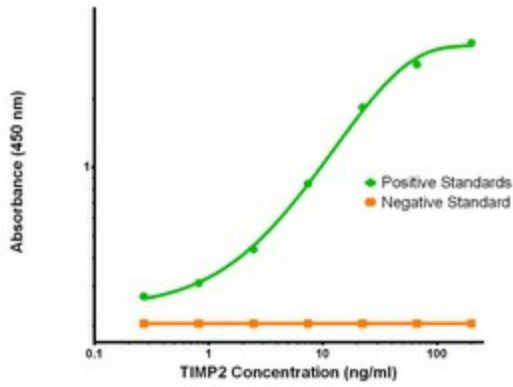
TIMP2 Elisa with 1A6 Capture (TA600235) and 2G7 Detection ([TA700235]) Antibodies. Substrate used: Recombinant Human TIMP2 ([TP309796])



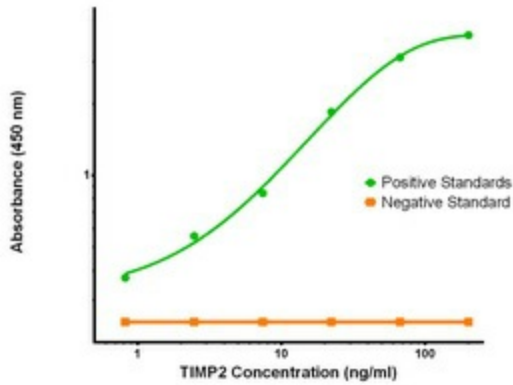
TIMP2 Elisa with 1A6 Capture (TA600235) and 3H8 Detection ([TA700236]) Antibodies. Substrate used: Recombinant Human TIMP2 ([TP309796])



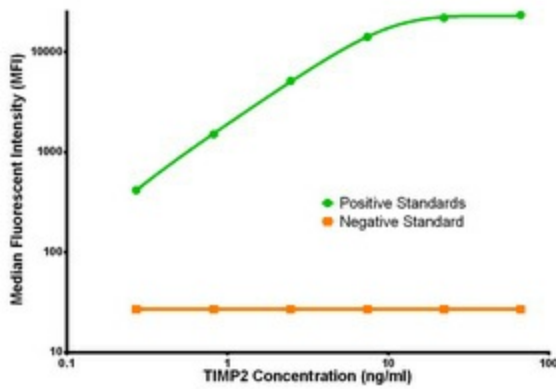
TIMP2 Elisa with 1A6 Capture (TA600235) and 1B11 Detection ([TA700237]) Antibodies. Substrate used: Recombinant Human TIMP2 ([TP309796])



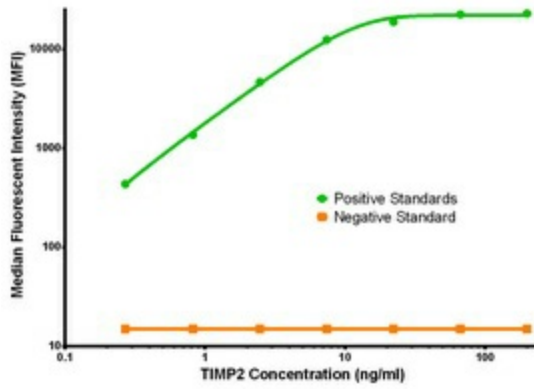
TIMP2 Elisa with 1A6 Capture (TA600235) and 3G7 Detection ([TA700238]) Antibodies. Substrate used: Recombinant Human TIMP2 ([TP309796])



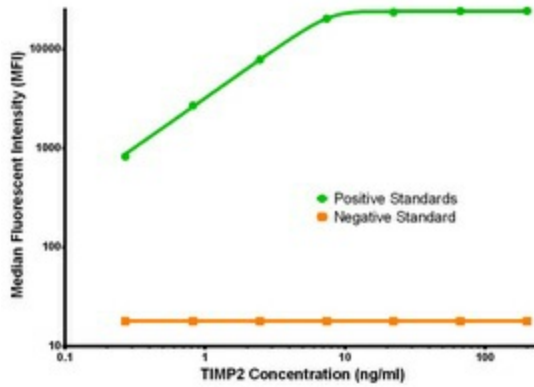
TIMP2 Elisa with 1A6 Capture (TA600235) and 1C4 Detection ([TA700242]) Antibodies. Substrate used: Recombinant Human TIMP2 ([TP309796])



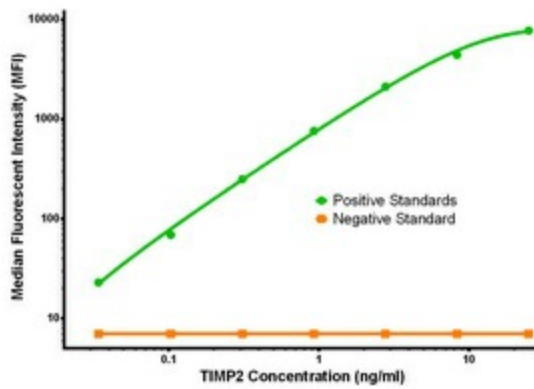
TIMP2 Luminex Elisa with 1A6 Capture (TA600235) and 2G7 Detection ([TA700235]) Antibodies. Substrate used: Recombinant Human TIMP2 ([TP309796])



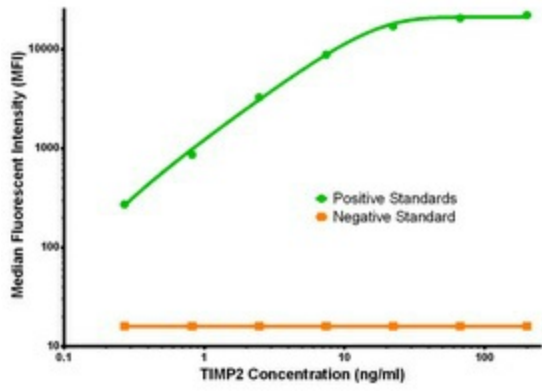
TIMP2 Luminex Elisa with 1A6 Capture (TA600235) and 3H8 Detection ([TA700236]) Antibodies. Substrate used: Recombinant Human TIMP2 ([TP309796])



TIMP2 Luminex Elisa with 1A6 Capture (TA600235) and 1B11 Detection ([TA700237]) Antibodies. Substrate used: Recombinant Human TIMP2 ([TP309796])



TIMP2 Luminex Elisa with 1A6 Capture (TA600235) and 3G7 Detection ([TA700238]) Antibodies. Substrate used: Recombinant Human TIMP2 ([TP309796])



TIMP2 Luminex Elisa with 1A6 Capture (TA600235) and 1C4 Detection ([TA700242]) Antibodies. Substrate used: Recombinant Human TIMP2 ([TP309796])