

Product datasheet for **TA600232**

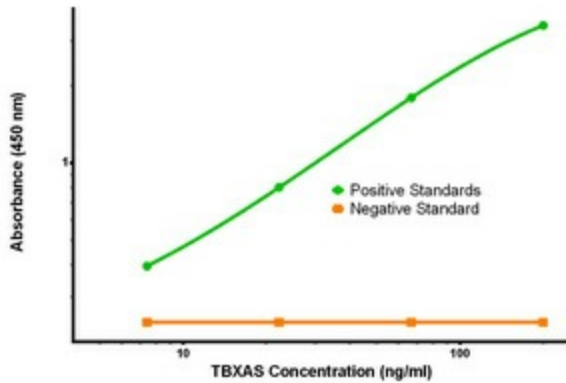
TBXAS1 Mouse Monoclonal Capture Antibody [Clone ID: OTI1A12]

Product data:

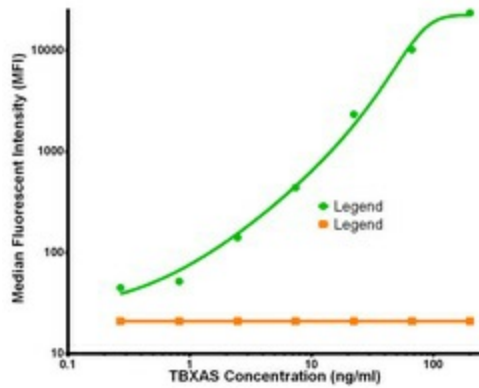
Product Type:	Primary Antibodies
Clone Name:	OTI1A12
Applications:	ELISA, LMNX
Recommended Dilution:	1:100 - 1:1000
Reactivity:	Human
Host:	Mouse
Isotype:	IgG1
Clonality:	Monoclonal
Immunogen:	Full length human recombinant protein of human TBXAS1(NP_001052) produced in HEK293T cell.
Formulation:	Stored in PBS (pH 7.4) containing 0.05% sodium azide and up to 5% trehalose
Concentration:	0.5 mg/ml
Conjugation:	Unconjugated
Storage:	Store at -20°C. Avoid repeat freeze/thaw cycles.
Stability:	Stable for 12 months from date of receipt.
Gene Name:	thromboxane A synthase 1
Database Link:	NP_001052 Entrez Gene 6916 Human P24557
Synonyms:	BDPLT14; CYP5; CYP5A1; GHOSAL; THAS; TS; TXAS; TXS
Matched ELISA Pair:	TA700230, TA700234
Protein Families:	Druggable Genome, P450
Protein Pathways:	Arachidonic acid metabolism, Metabolic pathways



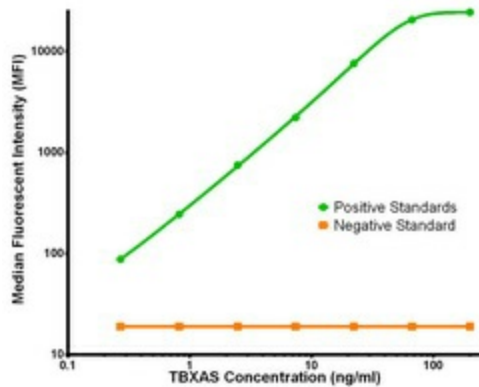
[View online »](#)

Product images:


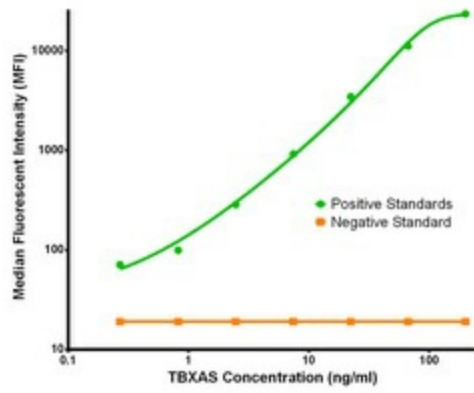
TBXAS Elisa with 1A12 Capture (TA600232) and 1B8 Detection ([TA700231]) Antibodies. Substrate used: Recombinant Human TBXAS ([TP308028])



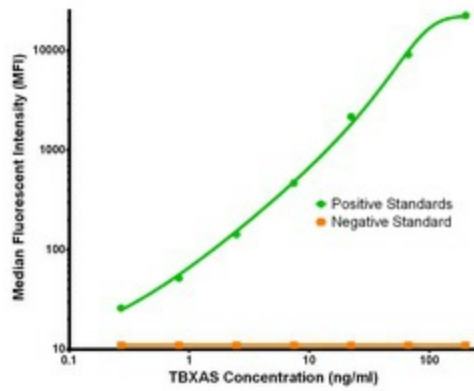
TBXAS Luminex Elisa with 1A12 Capture (TA600232) and 2C1 Detection ([TA700230]) Antibodies. Substrate used: Recombinant Human TBXAS ([TP308028])



TBXAS Luminex Elisa with 1A12 Capture (TA600232) and 1B8 Detection ([TA700231]) Antibodies. Substrate used: Recombinant Human TBXAS ([TP308028])



TBXAS Luminex Elisa with 1A12 Capture (TA600232) and 1A9 Detection ([TA700232]) Antibodies. Substrate used: Recombinant Human TBXAS ([TP308028])



TBXAS Luminex Elisa with 1A12 Capture (TA600232) and 1C3 Detection ([TA700234]) Antibodies. Substrate used: Recombinant Human TBXAS ([TP308028])