

Product datasheet for **TA600231**

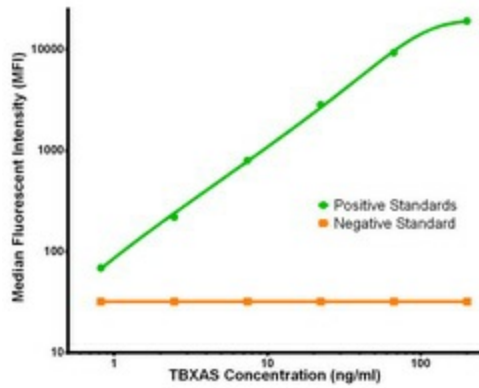
TBXAS1 Mouse Monoclonal Capture Antibody [Clone ID: OTI2C1]

Product data:

Product Type:	Primary Antibodies
Clone Name:	OTI2C1
Applications:	LMNX
Recommended Dilution:	1:100 - 1:1000
Reactivity:	Human
Host:	Mouse
Isotype:	IgG1
Clonality:	Monoclonal
Immunogen:	Full length human recombinant protein of human TBXAS1(NP_001052) produced in HEK293T cell.
Formulation:	Stored in PBS (pH 7.4) containing 0.05% sodium azide and up to 5% trehalose
Concentration:	0.5 mg/ml
Conjugation:	Unconjugated
Storage:	Store at -20°C. Avoid repeat freeze/thaw cycles.
Stability:	Stable for 12 months from date of receipt.
Gene Name:	thromboxane A synthase 1
Database Link:	NP_001052 Entrez Gene 6916 Human P24557
Synonyms:	BDPLT14; CYP5; CYP5A1; GHOSAL; THAS; TS; TXAS; TXS
Matched ELISA Pair:	TA700233
Protein Families:	Druggable Genome, P450
Protein Pathways:	Arachidonic acid metabolism, Metabolic pathways



[View online »](#)

Product images:

TBXAS Luminex Elisa with 2C1 Capture (TA600231) and 1A12 Detection ([TA700233]) Antibodies. Substrate used: Recombinant Human TBXAS ([TP308028])