

Product datasheet for **TA600222**

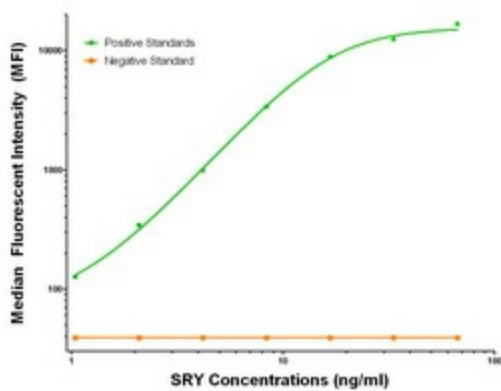
SRX Mouse Monoclonal Capture Antibody [Clone ID: OT11H10]

Product data:

| | |
|-----------------------|---|
| Product Type: | Primary Antibodies |
| Clone Name: | OT11H10 |
| Applications: | LMNX |
| Recommended Dilution: | 1:100 - 1:1000 |
| Reactivity: | Human |
| Host: | Mouse |
| Isotype: | IgG1 |
| Clonality: | Monoclonal |
| Immunogen: | Full length human recombinant protein of human SRX (NM_005986) produced in HEK293T cell. |
| Formulation: | Stored in PBS (pH 7.4) containing 0.05% sodium azide and up to 5% trehalose |
| Concentration: | 0.5 mg/ml |
| Conjugation: | Unconjugated |
| Storage: | Store at -20°C. Avoid repeat freeze/thaw cycles. |
| Stability: | Stable for 12 months from date of receipt. |
| Gene Name: | sex determining region Y |
| Database Link: | NP_003131 Entrez Gene 6736 Human Q05066 |
| Synonyms: | SRXX1; SRXY1; TDF; TDY |



[View online »](#)

Product images:

SRY Luminex Elisa with 1H10 Capture (TA600222) and Anti-Tag 1B12 Detection (TA700205) Antibodies. Substrate used: Recombinant Human SRY ([TP318236])