

## Product datasheet for **TA600221**

### CD105 (ENG) Mouse Monoclonal Capture Antibody [Clone ID: OTI6G8]

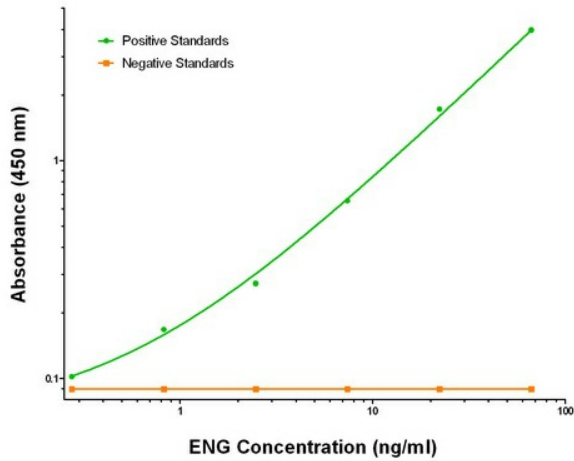
#### Product data:

Product Type:	Primary Antibodies
Clone Name:	OTI6G8
Applications:	ELISA, LMNX
Recommended Dilution:	1:100 - 1:1000
Reactivity:	Human
Host:	Mouse
Isotype:	IgG1
Clonality:	Monoclonal
Immunogen:	Full length human recombinant protein of human ENG (NM_000118) produced in HEK293T cell.
Formulation:	Stored in PBS (pH 7.4) containing 0.05% sodium azide and up to 5% trehalose
Concentration:	0.5 mg/ml
Conjugation:	Unconjugated
Storage:	Store at -20°C. Avoid repeat freeze/thaw cycles.
Stability:	Stable for 12 months from date of receipt.
Gene Name:	endoglin
Database Link:	<a href="#">NP_000109</a> <a href="#">Entrez Gene 2022 Human P17813</a>
Synonyms:	END; HHT1; ORW1
Matched ELISA Pair:	TA700218, TA700220
Protein Families:	Druggable Genome, ES Cell Differentiation/IPS, Transmembrane

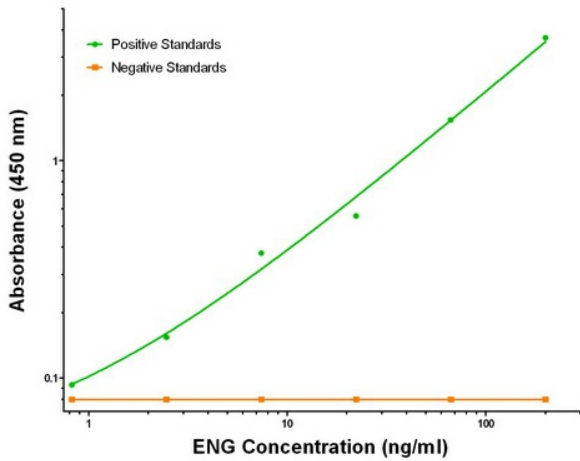


[View online »](#)

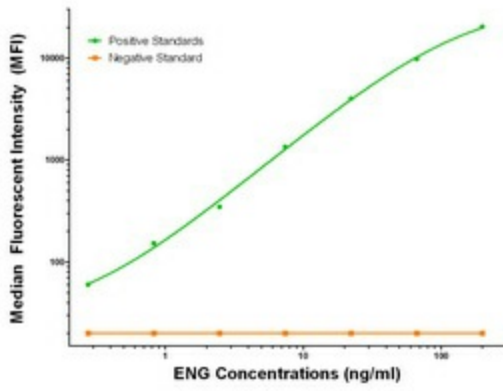
Product images:



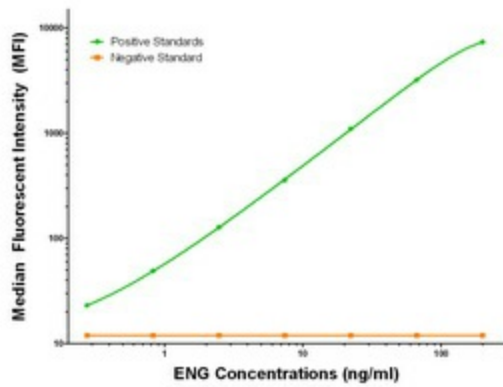
ENG ELISA with 6G8 Capture (TA600221) and 3D5 Detection ([TA700218]) Antibodies. Substrate used: Recombinant Human ENG ([TP321669])



ENG ELISA with 6G8 Capture (TA600221) and 8A1 Detection ([TA700220]) Antibodies. Substrate used: Recombinant Human ENG ([TP321669])



ENG Luminex Elisa with 6G8 Capture (TA600221) and 3D5 Detection ([TA700218]) Antibodies. Substrate used: Recombinant Human ENG ([TP321669])



ENG Luminex Elisa with 6G8 Capture (TA600221) and 8A1 Detection ([TA700220]) Antibodies. Substrate used: Recombinant Human ENG ([TP321669])