

Product datasheet for **TA600211**

Her2 (ERBB2) Mouse Monoclonal Capture Antibody [Clone ID: OTI9G2/9H2]

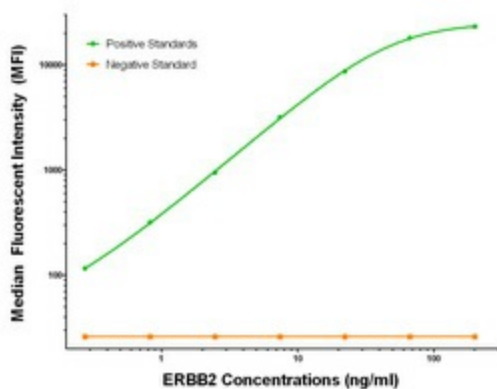
Product data:

Product Type:	Primary Antibodies
Clone Name:	OTI9G2/9H2
Applications:	LMNX
Recommended Dilution:	1:100 - 1:1000
Reactivity:	Human, Mouse, Rat
Host:	Mouse
Isotype:	IgG1
Clonality:	Monoclonal
Immunogen:	Full length human recombinant protein of human ERBB2 (NM_004448) produced in HEK293T cell.
Formulation:	Stored in PBS (pH 7.4) containing 0.05% sodium azide and up to 5% trehalose
Concentration:	0.5 mg/ml
Conjugation:	Unconjugated
Storage:	Store at -20°C. Avoid repeat freeze/thaw cycles.
Stability:	Stable for 12 months from date of receipt.
Gene Name:	erb-b2 receptor tyrosine kinase 2
Database Link:	NP_004439 Entrez Gene 13866 Mouse Entrez Gene 24337 Rat Entrez Gene 2064 Human P04626
Synonyms:	CD340; HER-2; HER-2/neu; HER2; MLN 19; NEU; NGL; TKR1
Matched ELISA Pair:	TA700209
Protein Families:	Druggable Genome, Protein Kinase, Transmembrane
Protein Pathways:	Adherens junction, Bladder cancer, Calcium signaling pathway, Endometrial cancer, ErbB signaling pathway, Focal adhesion, Non-small cell lung cancer, Pancreatic cancer, Pathways in cancer, Prostate cancer



[View online »](#)

Product images:



ERBB2 Luminex Elisa with 9G2/9H2 Capture (TA600211) and 1C5 Detection ([TA700209]) Antibodies. Substrate used: Recombinant Human ERBB2 ([TP312583])