

Product datasheet for **TA600206**

Kallikrein 8 (KLK8) Mouse Monoclonal Capture Antibody [Clone ID: OTI3C10]

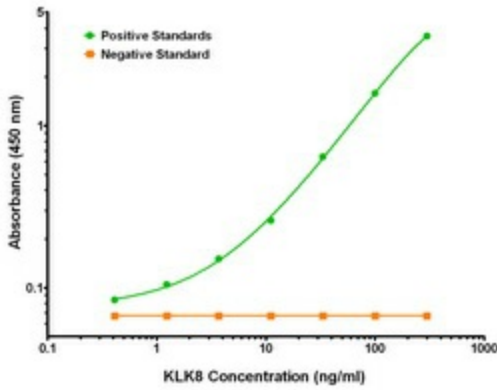
Product data:

| | |
|-----------------------|--|
| Product Type: | Primary Antibodies |
| Clone Name: | OTI3C10 |
| Applications: | ELISA, LMNX |
| Recommended Dilution: | 1:100 - 1:1000 |
| Reactivity: | Human |
| Host: | Mouse |
| Isotype: | IgG1 |
| Clonality: | Monoclonal |
| Immunogen: | Full length human recombinant protein of human KLK8(NP_009127) produced in HEK293T cell. |
| Formulation: | Stored in PBS (pH 7.4) containing 0.05% sodium azide and up to 5% trehalose |
| Concentration: | 0.5 mg/ml |
| Conjugation: | Unconjugated |
| Storage: | Store at -20°C. Avoid repeat freeze/thaw cycles. |
| Stability: | Stable for 12 months from date of receipt. |
| Gene Name: | kallikrein related peptidase 8 |
| Database Link: | NP_009127 Entrez Gene 11202 Human O60259 |
| Synonyms: | HNP; NP; NRPN; PRSS19; TADG14 |
| Matched ELISA Pair: | TA700200 |
| Protein Families: | Druggable Genome, Secreted Protein, Transmembrane |

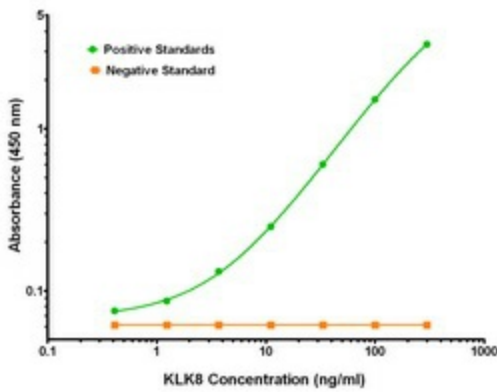


[View online »](#)

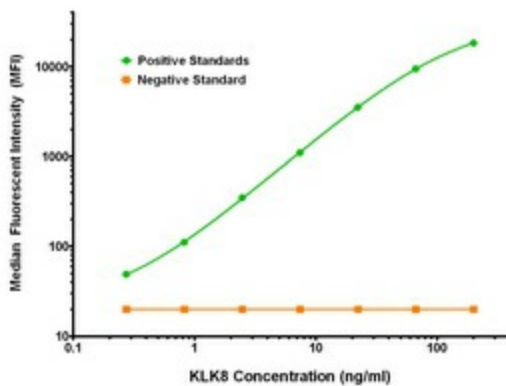
Product images:



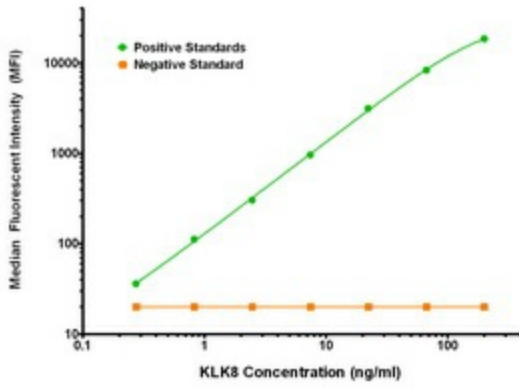
KLK8 Elisa with 3C10 Capture (TA600206) and 10D3 Detection ([TA700200]) Antibodies. Substrate used: Recombinant Human KLK8 ([TP308152])



KLK8 Elisa with 3C10 Capture (TA600206) and 1D2 Detection ([TA700200]) Antibodies. Substrate used: Recombinant Human KLK8 ([TP308152])



KLK8 Luminex Elisa with 3C10 Capture (TA600206) and 10D3 Detection ([TA700200]) Antibodies. Substrate used: Recombinant Human KLK8 ([TP308152])



KLK8 Luminex Elisa with 3C10 Capture (TA600206) and 1D2 Detection ([TA700201]) Antibodies. Substrate used: Recombinant Human KLK8 ([TP308152])