

## Product datasheet for **TA600202**

### **Kallikrein 8 (KLK8) Mouse Monoclonal Capture Antibody [Clone ID: OTI16G2]**

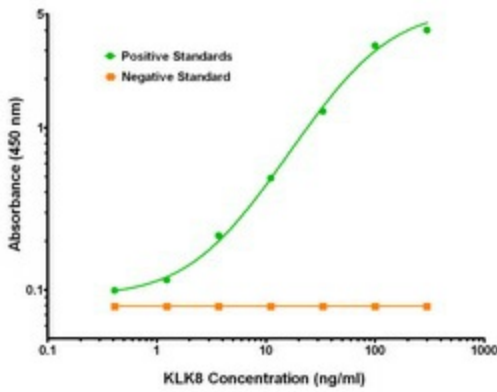
#### **Product data:**

<b>Product Type:</b>	Primary Antibodies
<b>Clone Name:</b>	OTI16G2
<b>Applications:</b>	ELISA, LMNX
<b>Recommended Dilution:</b>	1:100 - 1:1000
<b>Reactivity:</b>	Human
<b>Host:</b>	Mouse
<b>Isotype:</b>	IgG2a
<b>Clonality:</b>	Monoclonal
<b>Immunogen:</b>	Full length human recombinant protein of human KLK8(NP_009127) produced in HEK293T cell.
<b>Formulation:</b>	Stored in PBS (pH 7.4) containing 0.05% sodium azide and up to 5% trehalose
<b>Concentration:</b>	0.5 mg/ml
<b>Conjugation:</b>	Unconjugated
<b>Storage:</b>	Store at -20°C. Avoid repeat freeze/thaw cycles.
<b>Stability:</b>	Stable for 12 months from date of receipt.
<b>Gene Name:</b>	kallikrein related peptidase 8
<b>Database Link:</b>	<a href="#">NP_009127</a> <a href="#">Entrez Gene 11202 Human</a> <a href="#">O60259</a>
<b>Synonyms:</b>	HNP; NP; NRPN; PRSS19; TADG14
<b>Matched ELISA Pair:</b>	TA700202
<b>Protein Families:</b>	Druggable Genome, Secreted Protein, Transmembrane

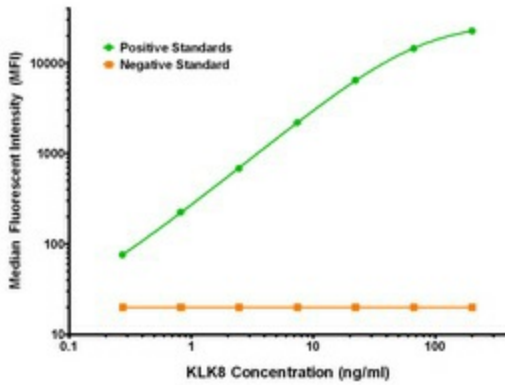


[View online »](#)

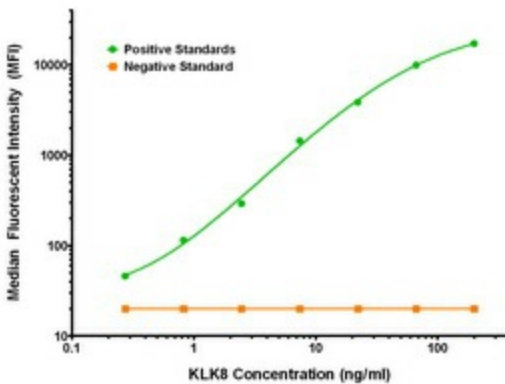
Product images:



KLK8 Elisa with 16G2 Capture (TA600202) and 2C10 Detection ([TA700202]) Antibodies. Substrate used: Recombinant Human KLK8 ([TP308152])



KLK8 Luminex Elisa with 16G2 Capture (TA600202) and 2C10 Detection ([TA700202]) Antibodies. Substrate used: Recombinant Human KLK8 ([TP308152])



KLK8 Luminex Elisa with 16G2 Capture (TA600202) and 3C10 Detection ([TA700203]) Antibodies. Substrate used: Recombinant Human KLK8 ([TP308152])