

Product datasheet for **TA600200**

Kallikrein 8 (KLK8) Mouse Monoclonal Capture Antibody [Clone ID: OTI10D3]

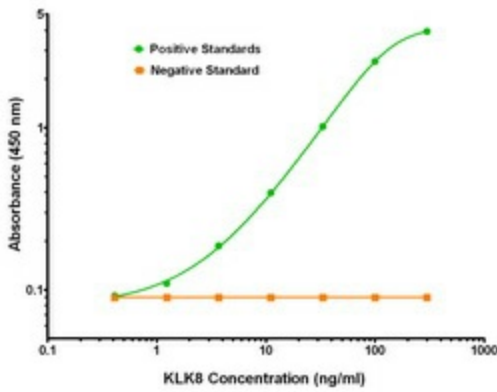
Product data:

Product Type:	Primary Antibodies
Clone Name:	OTI10D3
Applications:	ELISA, LMNX
Recommended Dilution:	1:100 - 1:1000
Reactivity:	Human
Host:	Mouse
Isotype:	IgG2b
Clonality:	Monoclonal
Immunogen:	Full length human recombinant protein of human KLK8(NP_009127) produced in HEK293T cell.
Formulation:	Stored in PBS (pH 7.4) containing 0.05% sodium azide and up to 5% trehalose
Concentration:	0.5 mg/ml
Conjugation:	Unconjugated
Storage:	Store at -20°C. Avoid repeat freeze/thaw cycles.
Stability:	Stable for 12 months from date of receipt.
Gene Name:	kallikrein related peptidase 8
Database Link:	NP_009127 Entrez Gene 11202 Human O60259
Synonyms:	HNP; NP; NRPN; PRSS19; TADG14
Matched ELISA Pair:	TA700202, TA700203
Protein Families:	Druggable Genome, Secreted Protein, Transmembrane

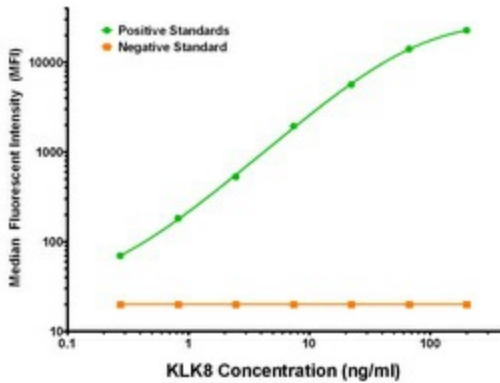


[View online »](#)

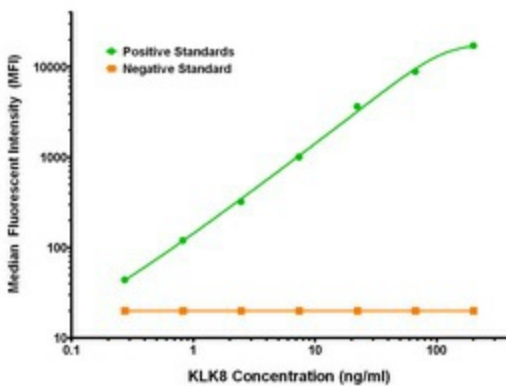
Product images:



KLK8 Elisa with 10D3 Capture (TA600200) and 2C10 Detection ([TA700202]) Antibodies. Substrate used: Recombinant Human KLK8 ([TP308152])



KLK8 Luminex Elisa with 10D3 Capture (TA600200) and 2C10 Detection ([TA700202]) Antibodies. Substrate used: Recombinant Human KLK8 ([TP308152])



KLK8 Luminex Elisa with 10D3 Capture (TA600200) and 3C10 Detection ([TA700203]) Antibodies. Substrate used: Recombinant Human KLK8 ([TP308152])