

Product datasheet for **TA600198**

Isocitrate dehydrogenase (IDH1) Mouse Monoclonal Capture Antibody [Clone ID: OTI2H9]

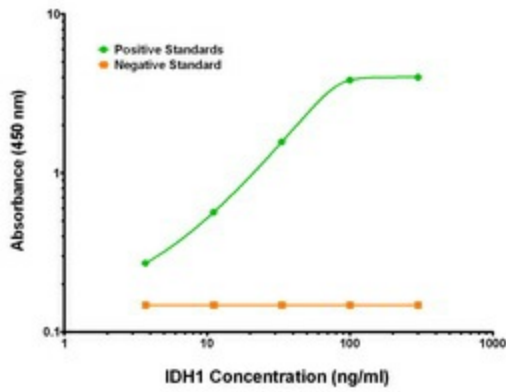
Product data:

Product Type:	Primary Antibodies
Clone Name:	OTI2H9
Applications:	ELISA, LMNX
Recommended Dilution:	1:100 - 1:1000
Reactivity:	Human, Mouse, Rat
Host:	Mouse
Isotype:	IgG1
Clonality:	Monoclonal
Immunogen:	Full length human recombinant protein of human IDH1 (NP_005887) produced in HEK293T cell.
Formulation:	Stored in PBS (pH 7.4) containing 0.05% sodium azide and up to 5% trehalose
Concentration:	0.5 mg/ml
Conjugation:	Unconjugated
Storage:	Store at -20°C. Avoid repeat freeze/thaw cycles.
Stability:	Stable for 12 months from date of receipt.
Gene Name:	isocitrate dehydrogenase (NADP(+)) 1
Database Link:	NP_005887 Entrez Gene 15926 Mouse Entrez Gene 24479 Rat Entrez Gene 3417 Human O75874
Synonyms:	HEL-216; HEL-S-26; IDCD; IDH; IDP; IDPC; PICD
Matched ELISA Pair:	TA700199
Protein Pathways:	Citrate cycle (TCA cycle), Glutathione metabolism, Metabolic pathways

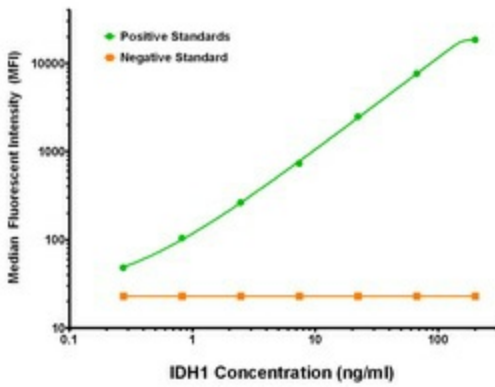


[View online »](#)

Product images:



IDH1 Elisa with 2H9 Capture (TA600198) and 24A2 Detection ([TA700199]) Antibodies. Substrate used: Recombinant Human IDH1 ([TP310582])



IDH1 Luminex Elisa with 2H9 Capture (TA600198) and 24A2 Detection ([TA700199]) Antibodies. Substrate used: Recombinant Human IDH1 ([TP310582])