

Product datasheet for **TA600196**

E Cadherin (CDH1) Mouse Monoclonal Capture Antibody [Clone ID: OTI4F1]

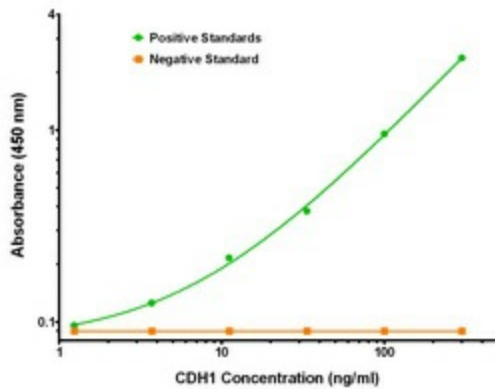
Product data:

Product Type:	Primary Antibodies
Clone Name:	OTI4F1
Applications:	ELISA, LMNX
Recommended Dilution:	1:100 - 1:1000
Reactivity:	Human
Host:	Mouse
Isotype:	IgG1
Clonality:	Monoclonal
Immunogen:	Full length human recombinant protein of human CDH1 (NP_004351) produced in HEK293T cell.
Formulation:	Stored in PBS (pH 7.4) containing 0.05% sodium azide and up to 5% trehalose
Concentration:	0.5 mg/ml
Conjugation:	Unconjugated
Storage:	Store at -20°C. Avoid repeat freeze/thaw cycles.
Stability:	Stable for 12 months from date of receipt.
Gene Name:	cadherin 1
Database Link:	NP_004351 Entrez Gene 999 Human P12830
Synonyms:	Arc-1; CD324; CDHE; ECAD; LCAM; UVO
Matched ELISA Pair:	TA700197
Protein Families:	Druggable Genome, ES Cell Differentiation/IPS, Transmembrane
Protein Pathways:	Adherens junction, Bladder cancer, Cell adhesion molecules (CAMs), Endometrial cancer, Melanoma, Pathogenic Escherichia coli infection, Pathways in cancer, Thyroid cancer

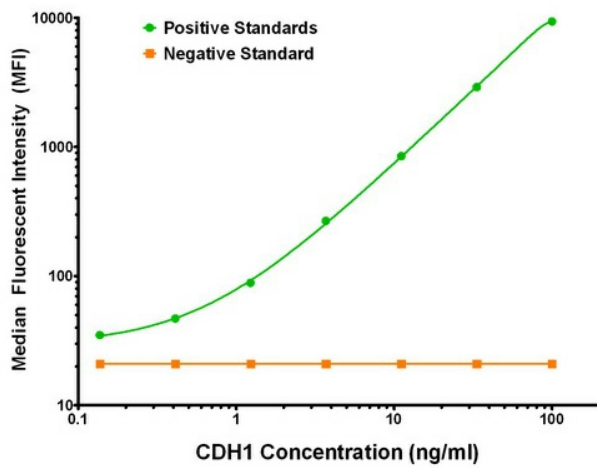


[View online »](#)

Product images:



CDH1 Elisa with 4F1 Capture (TA600196) and 2F9 Detection ([TA700197]) Antibodies. Substrate used: Recombinant Human CDH1 ([TP320731])



CDH1 Luminex Elisa with 4F1 Capture (TA600196) and 2F9 Detection ([TA700197]) Antibodies. Substrate used: Recombinant Human CDH1 ([TP320731])