

Product datasheet for **TA600184**

STING (TMEM173) Mouse Monoclonal Capture Antibody [Clone ID: OTI4E12]

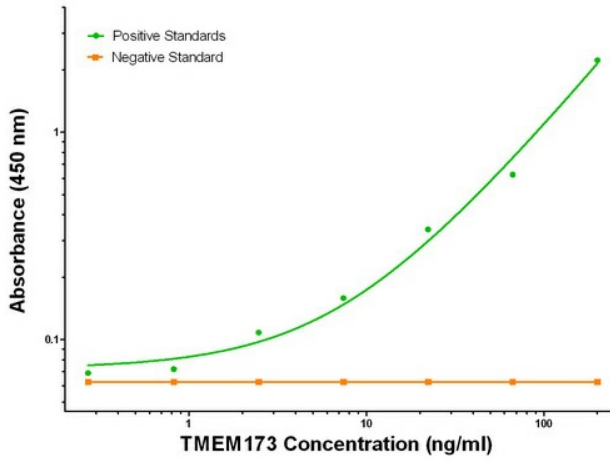
Product data:

Product Type:	Primary Antibodies
Clone Name:	OTI4E12
Applications:	ELISA, LMNX
Recommended Dilution:	1:100 - 1:1000
Reactivity:	Human
Host:	Mouse
Isotype:	IgG1
Clonality:	Monoclonal
Immunogen:	Full length human recombinant protein of human TMEM173 (NM_198282) produced in HEK293T cell.
Formulation:	Stored in PBS (pH 7.4) containing 0.05% sodium azide and up to 5% trehalose
Concentration:	0.5 mg/ml
Conjugation:	Unconjugated
Storage:	Store at -20°C. Avoid repeat freeze/thaw cycles.
Stability:	Stable for 12 months from date of receipt.
Gene Name:	stimulator of interferon response cGAMP interactor 1
Database Link:	NP_938023 Entrez Gene 340061 Human Q86WV6
Synonyms:	ERIS; hMITA; hSTING; MITA; MPYS; NET23; SAVI; STING
Matched ELISA Pair:	TA700184, TA700185, TA700186
Protein Pathways:	Cytosolic DNA-sensing pathway, RIG-I-like receptor signaling pathway

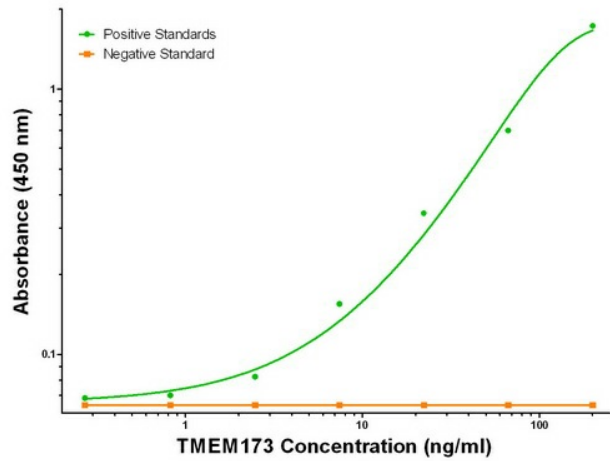


[View online »](#)

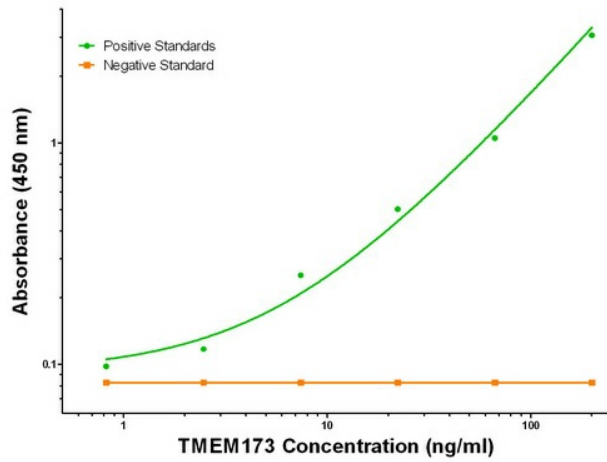
Product images:



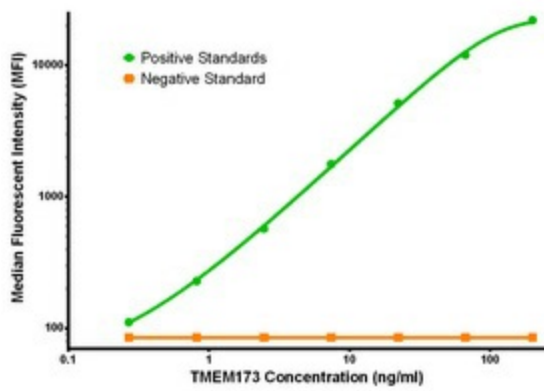
TMEM173 ELISA with 4E12 Capture (TA600184) and 1A7 Detection ([TA700185]) Antibodies. Substrate used: Recombinant Human TMEM173 ([TP308418])



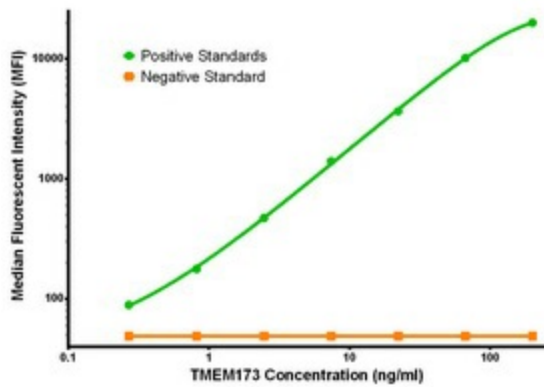
TMEM173 ELISA with 4E12 Capture (TA600184) and 2C9 Detection ([TA700186]) Antibodies. Substrate used: Recombinant Human TMEM173 ([TP308418])



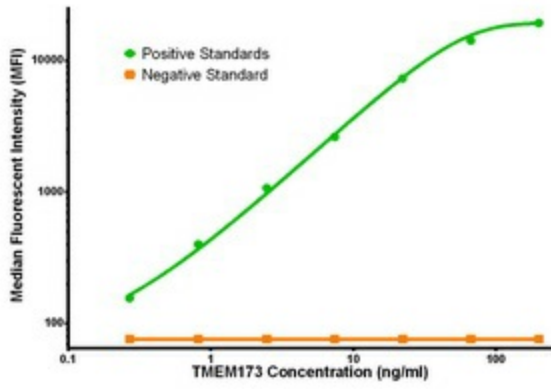
TMEM173 ELISA with 4E12 Capture (TA600184) and 4H8 Detection ([TA700184]) Antibodies. Substrate used: Recombinant Human TMEM173 (TP308418)



TMEM173 Luminex Elisa with 4E12 Capture (TA600184) and 4H8 Detection ([TA700184]) Antibodies. Substrate used: Recombinant Human TMEM173 (TP308418)



TMEM173 Luminex Elisa with 4E12 Capture (TA600184) and 1A7 Detection ([TA700185]) Antibodies. Substrate used: Recombinant Human TMEM173 (TP308418)



TMEM173 Luminex Elisa with 4E12 Capture (TA600184) and 2C9 Detection ([TA700186]) Antibodies. Substrate used: Recombinant Human TMEM173 ([TP308418])