

Product datasheet for **TA600180**

STK39 Mouse Monoclonal Capture Antibody [Clone ID: OTI3C12]

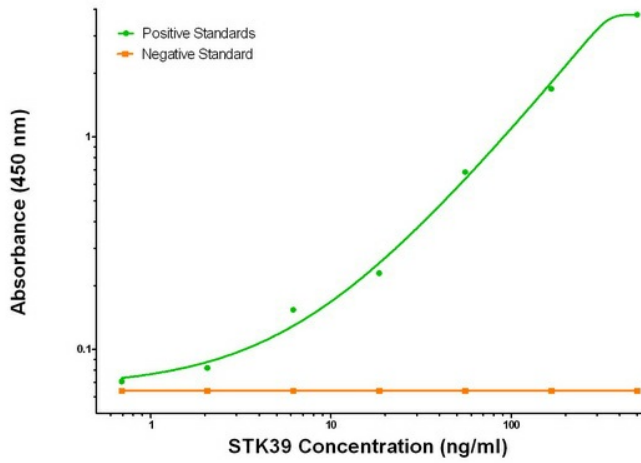
Product data:

Product Type:	Primary Antibodies
Clone Name:	OTI3C12
Applications:	ELISA, LMNX
Recommended Dilution:	1:100 - 1:1000
Reactivity:	Human, Mouse, Rat
Host:	Mouse
Isotype:	IgG1
Clonality:	Monoclonal
Immunogen:	Full length human recombinant protein of human STK39 (NM_013233) produced in HEK293T cell.
Formulation:	Stored in PBS (pH 7.4) containing 0.05% sodium azide and up to 5% trehalose
Concentration:	0.5 mg/ml
Conjugation:	Unconjugated
Storage:	Store at -20°C. Avoid repeat freeze/thaw cycles.
Stability:	Stable for 12 months from date of receipt.
Gene Name:	serine/threonine kinase 39
Database Link:	NP_037365 Entrez Gene 53416 Mouse Entrez Gene 54348 Rat Entrez Gene 27347 Human Q9UEW8
Synonyms:	DCHT; PASK; SPAK
Matched ELISA Pair:	TA700181, TA700182
Protein Families:	Druggable Genome, Protein Kinase

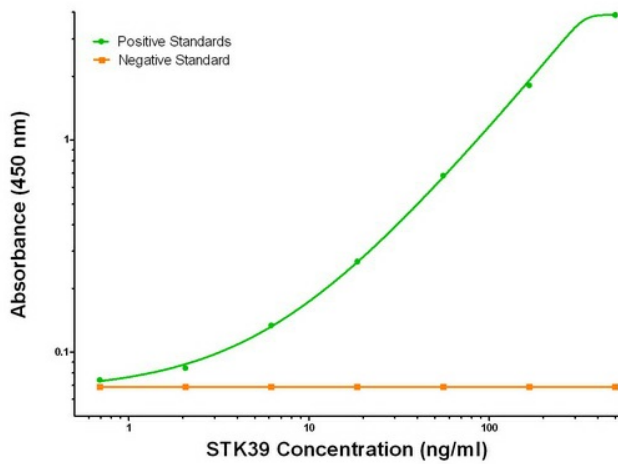


[View online »](#)

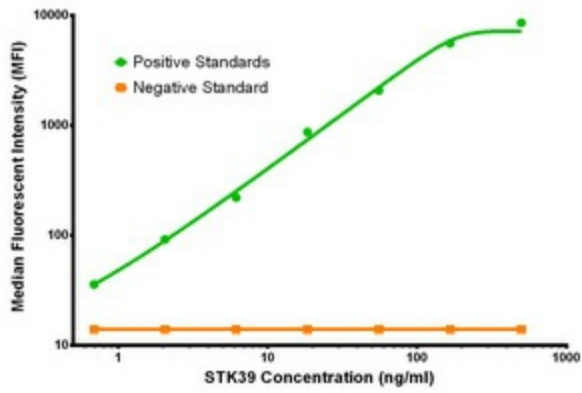
Product images:



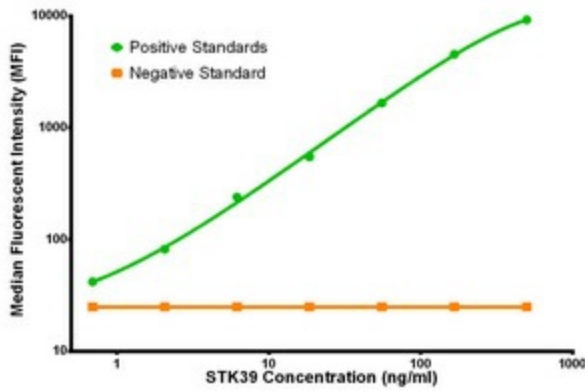
STK39 ELISA with 3C12 Capture (TA600180) and 4E3 Detection ([TA700181]) Antibodies. Substrate used: Recombinant Human STK39 ([TP323981])



STK39 ELISA with 3C12 Capture (TA600180) and 4H3 Detection ([TA700182]) Antibodies. Substrate used: Recombinant Human STK39 ([TP323981])



STK39 Luminex Elisa with 3C12 Capture (TA600180) and 4H3 Detection ([TA700182]) Antibodies. Substrate used: Recombinant Human STK39 ([TP323981])



STK39 Luminex Elisa with 3C12 Capture (TA600180) and 4E3 Detection ([TA700181]) Antibodies. Substrate used: Recombinant Human STK39 ([TP323981])