

## Product datasheet for **TA600175**

### ERG Mouse Monoclonal Capture Antibody [Clone ID: OTI4H7]

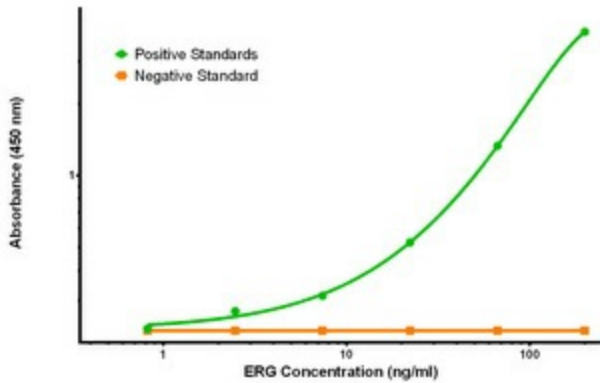
#### Product data:

Product Type:	Primary Antibodies
Clone Name:	OTI4H7
Applications:	ELISA, LMNX
Recommended Dilution:	1:100 - 1:1000
Reactivity:	Human, Mouse, Rat
Host:	Mouse
Isotype:	IgG1
Clonality:	Monoclonal
Immunogen:	Full length human recombinant protein of human ERG(NP_891548) produced in HEK293T cell.
Formulation:	Stored in PBS (pH 7.4) containing 0.05% sodium azide and up to 5% trehalose
Concentration:	0.5 mg/ml
Conjugation:	Unconjugated
Storage:	Store at -20°C. Avoid repeat freeze/thaw cycles.
Stability:	Stable for 12 months from date of receipt.
Gene Name:	ETS transcription factor ERG
Database Link:	<a href="#">NP_891548</a> <a href="#">Entrez Gene 13876 Mouse</a> <a href="#">Entrez Gene 170909 Rat</a> <a href="#">Entrez Gene 2078 Human</a> <a href="#">P11308</a>
Synonyms:	erg-3; p55
Matched ELISA Pair:	TA700174
Protein Families:	Druggable Genome, Transcription Factors

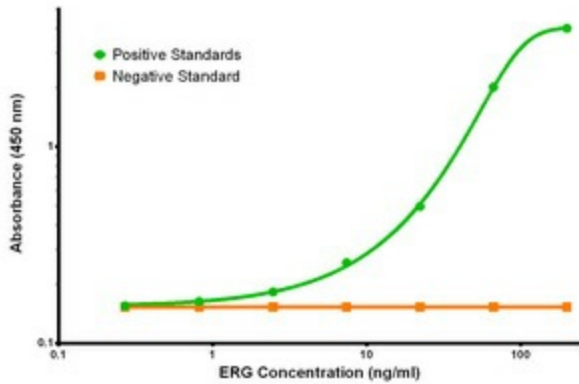


[View online »](#)

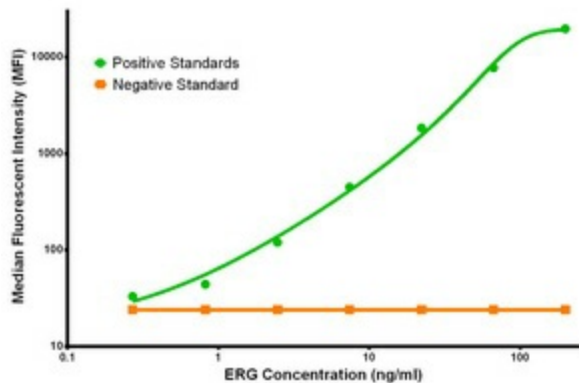
Product images:



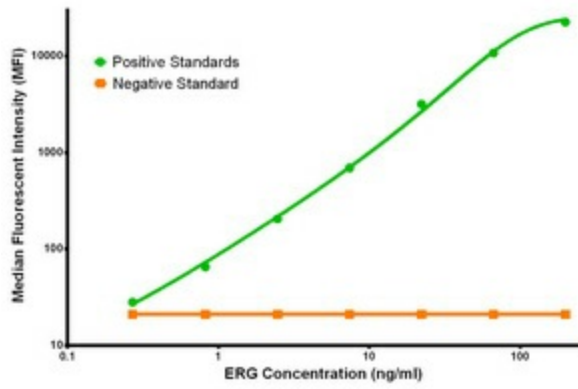
ERG Elisa with 4H7 Capture (TA600175) and 2G8 Detection ([TA700174]) Antibodies. Substrate used: Recombinant Human ERG ([TP308093])



ERG Elisa with 4H7 Capture (TA600175) and 8A9 Detection ([TA700175]) Antibodies. Substrate used: Recombinant Human ERG ([TP308093])



ERG Luminex Elisa with 4H7 Capture (TA600175) and 2G8 Detection ([TA700174]) Antibodies. Substrate used: Recombinant Human ERG ([TP308093])



ERG Luminex Elisa with 4H7 Capture (TA600175) and 8A9 Detection ([TA700175]) Antibodies. Substrate used: Recombinant Human ERG ([TP308093])