

Product datasheet for **TA600171**

STAT5A Mouse Monoclonal Capture Antibody [Clone ID: OTI8H1]

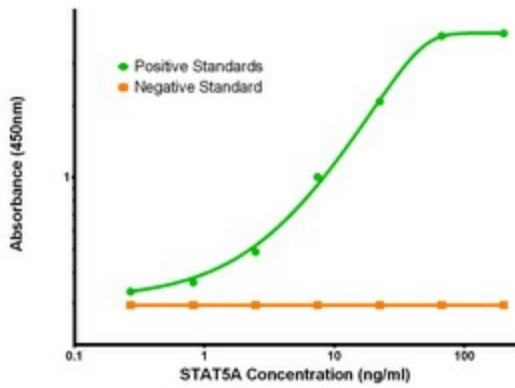
Product data:

Product Type:	Primary Antibodies
Clone Name:	OTI8H1
Applications:	ELISA, LMNX
Recommended Dilution:	1:100 - 1:1000
Reactivity:	Human, Mouse, Rat
Host:	Mouse
Isotype:	IgG1
Clonality:	Monoclonal
Immunogen:	Full length human recombinant protein of human STAT5A (NP_003143) produced in HEK293T cell.
Formulation:	Stored in PBS (pH 7.4) containing 0.05% sodium azide and up to 5% trehalose
Concentration:	0.5 mg/ml
Conjugation:	Unconjugated
Storage:	Store at -20°C. Avoid repeat freeze/thaw cycles.
Stability:	Stable for 12 months from date of receipt.
Gene Name:	signal transducer and activator of transcription 5A
Database Link:	NP_003143 Entrez Gene 20850 Mouse Entrez Gene 24918 Rat Entrez Gene 6776 Human P42229
Synonyms:	MGF; STAT5
Matched ELISA Pair:	TA700170
Protein Families:	Druggable Genome, ES Cell Differentiation/IPS, Stem cell relevant signaling - DSL/Notch pathway, Stem cell relevant signaling - JAK/STAT signaling pathway, Transcription Factors
Protein Pathways:	Acute myeloid leukemia, Chronic myeloid leukemia, ErbB signaling pathway, Jak-STAT signaling pathway, Pathways in cancer

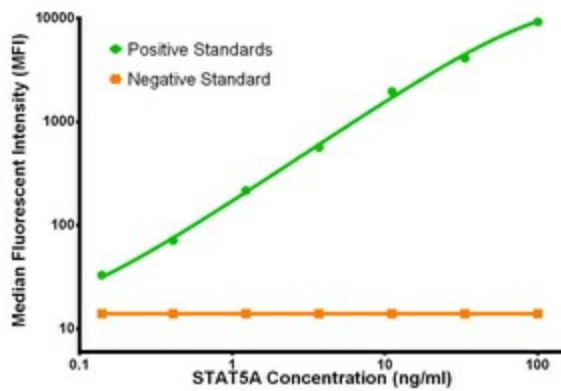


[View online »](#)

Product images:



STAT5A Elisa with 8H1 Capture (TA600171) and 4H1 Detection ([TA700170]) Antibodies. Substrate used: Recombinant Human STAT5A ([TP305753])



STAT5A Luminex Elisa with 8H1 Capture (TA600171) and 4H1 Detection ([TA700170]) Antibodies. Substrate used: Recombinant Human STAT5A ([TP305753])