

Product datasheet for **TA600169**

PSMD2 Mouse Monoclonal Capture Antibody [Clone ID: OTI1H3]

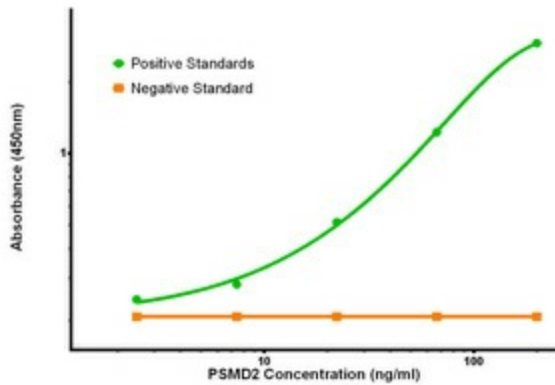
Product data:

Product Type:	Primary Antibodies
Clone Name:	OTI1H3
Applications:	ELISA, LMNX
Recommended Dilution:	1:100 - 1:1000
Reactivity:	Human, Mouse, Rat
Host:	Mouse
Isotype:	IgG1
Clonality:	Monoclonal
Immunogen:	Full length human recombinant protein of human PSMD2 (NP_002799) produced in HEK293T cell.
Formulation:	Stored in PBS (pH 7.4) containing 0.05% sodium azide and up to 5% trehalose
Concentration:	0.5 mg/ml
Conjugation:	Unconjugated
Storage:	Store at -20°C. Avoid repeat freeze/thaw cycles.
Stability:	Stable for 12 months from date of receipt.
Gene Name:	proteasome 26S subunit ubiquitin receptor, non-ATPase 2
Database Link:	NP_002799 Entrez Gene 21762 Mouse Entrez Gene 287984 Rat Entrez Gene 5708 Human Q13200
Synonyms:	P97; RPN1; S2; TRAP2
Matched ELISA Pair:	TA700164
Protein Families:	Druggable Genome
Protein Pathways:	Proteasome

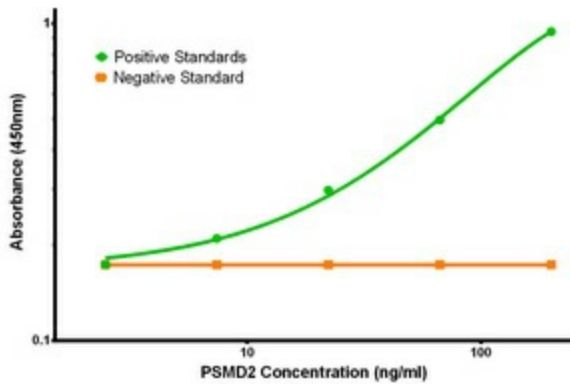


[View online »](#)

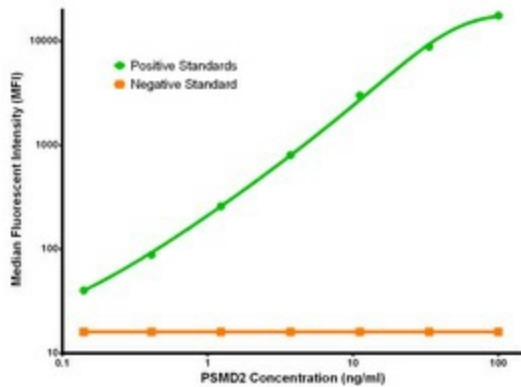
Product images:



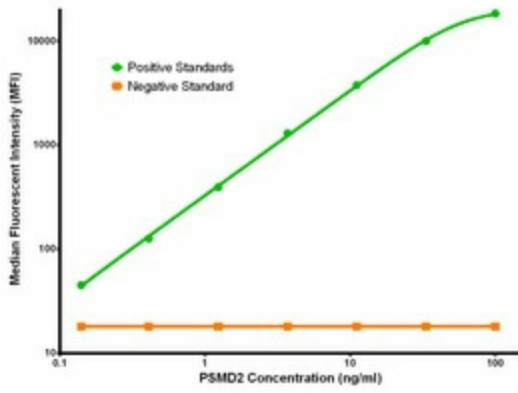
PSMD2 Elisa with 1H3 Capture (TA600169) and 1G5 Detection ([TA700164]) Antibodies. Substrate used: Recombinant Human PSMD2 ([TP303204])



PSMD2 Elisa with 1H3 Capture (TA600169) and 1D1 Detection ([TA700165]) Antibodies. Substrate used: Recombinant Human PSMD2 ([TP303204])



PSMD2 Luminex Elisa with 1H3 Capture (TA600169) and 1G5 Detection ([TA700164]) Antibodies. Substrate used: Recombinant Human PSMD2 ([TP303204])



PSMD2 Luminex Elisa with 1H3 Capture (TA600169) and 1D1 Detection ([TA700165]) Antibodies. Substrate used: Recombinant Human PSMD2 ([TP303204])