

## Product datasheet for **TA600163**

### Monoacylglycerol Lipase (MGLL) Mouse Monoclonal Capture Antibody [Clone ID: OTI2C9]

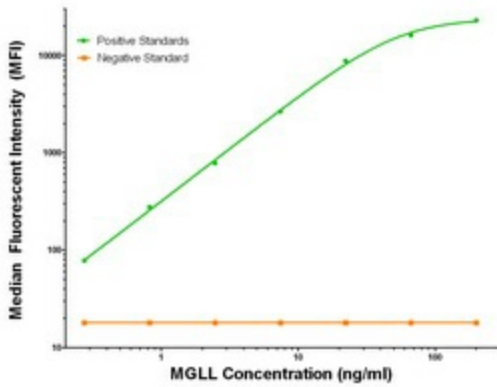
#### Product data:

Product Type:	Primary Antibodies
Clone Name:	OTI2C9
Applications:	LMNX
Recommended Dilution:	1:100 - 1:1000
Reactivity:	Human
Host:	Mouse
Isotype:	IgG1
Clonality:	Monoclonal
Immunogen:	Full length human recombinant protein of human MGLL (NM_007283) produced in HEK293T cell.
Formulation:	Stored in PBS (pH 7.4) containing 0.05% sodium azide and up to 5% trehalose
Concentration:	0.5 mg/ml
Conjugation:	Unconjugated
Storage:	Store at -20°C. Avoid repeat freeze/thaw cycles.
Stability:	Stable for 12 months from date of receipt.
Gene Name:	monoglyceride lipase
Database Link:	<a href="#">NP_009214</a> <a href="#">Entrez Gene 11343 Human</a> <a href="#">Q99685</a>
Synonyms:	HU-K5; HUK5; MAGL; MGL
Matched ELISA Pair:	TA700161, TA700162
Protein Families:	Druggable Genome, Protease
Protein Pathways:	Glycerolipid metabolism, Metabolic pathways

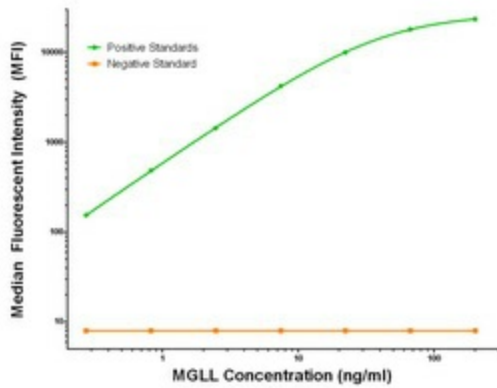


[View online »](#)

Product images:



MGLL Luminex Elisa with 2C9 Capture (TA600163) and 1H1 Detection ([TA700161]) Antibodies. Substrate used: Recombinant Human MGLL ([TP318358])



MGLL Luminex Elisa with 2C9 Capture (TA600163) and 4D1 Detection ([TA700162]) Antibodies. Substrate used: Recombinant Human MGLL ([TP318358])