

Product datasheet for **TA600153**

Leukotriene A4 hydrolase (LTA4H) Mouse Monoclonal Capture Antibody [Clone ID: OTI5C10]

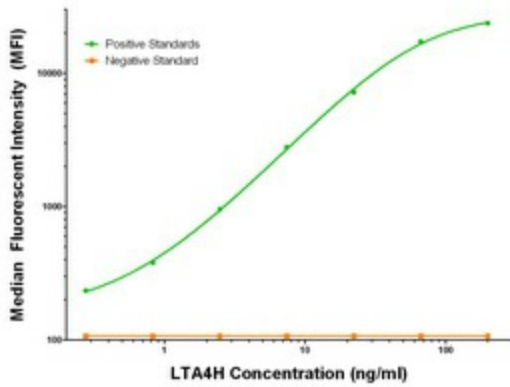
Product data:

Product Type:	Primary Antibodies
Clone Name:	OTI5C10
Applications:	LMNX
Recommended Dilution:	1:100 - 1:1000
Reactivity:	Human, Mouse, Rat
Host:	Mouse
Isotype:	IgG1
Clonality:	Monoclonal
Immunogen:	Full length human recombinant protein of human LTA4H (NM_000895) produced in HEK293T cell.
Formulation:	Stored in PBS (pH 7.4) containing 0.05% sodium azide and up to 5% trehalose
Concentration:	0.5 mg/ml
Conjugation:	Unconjugated
Storage:	Store at -20°C. Avoid repeat freeze/thaw cycles.
Stability:	Stable for 12 months from date of receipt.
Gene Name:	leukotriene A4 hydrolase
Database Link:	NP_000886 Entrez Gene 16993 MouseEntrez Gene 299732 RatEntrez Gene 4048 Human P09960
Synonyms:	leukotriene A4 hydrolase
Matched ELISA Pair:	TA700155, TA700190, TA700191
Protein Families:	Druggable Genome, Protease
Protein Pathways:	Arachidonic acid metabolism, Metabolic pathways

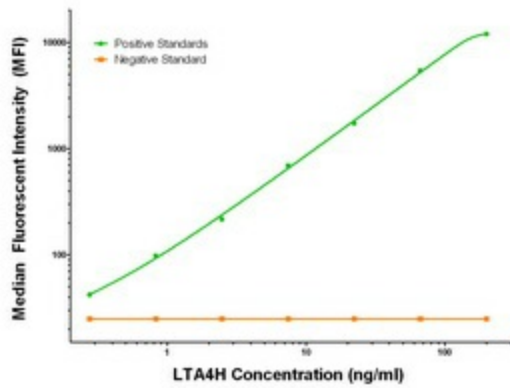


[View online »](#)

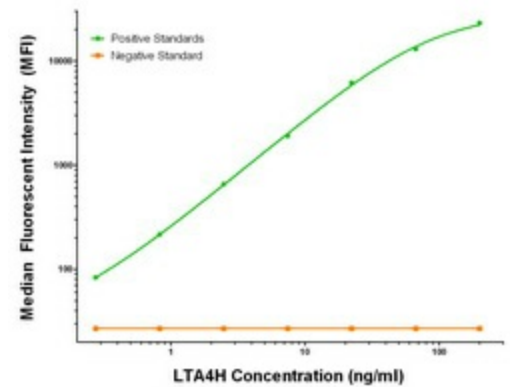
Product images:



LTA4H Luminex Elisa with 5C10 Capture (TA600153) and 2A9 Detection ([TA700190]) Antibodies. Substrate used: Recombinant Human LTA4H ([TP307617])



LTA4H Luminex Elisa with 5C10 Capture (TA600153) and 3C11 Detection ([TA700191]) Antibodies. Substrate used: Recombinant Human LTA4H ([TP307617])



LTA4H Luminex Elisa with 5C10 Capture (TA600153) and 8F4 Detection ([TA700155]) Antibodies. Substrate used: Recombinant Human LTA4H ([TP307617])