

Product datasheet for **TA600146**

ARH (LDLRAP1) Mouse Monoclonal Capture Antibody [Clone ID: OTI2B2]

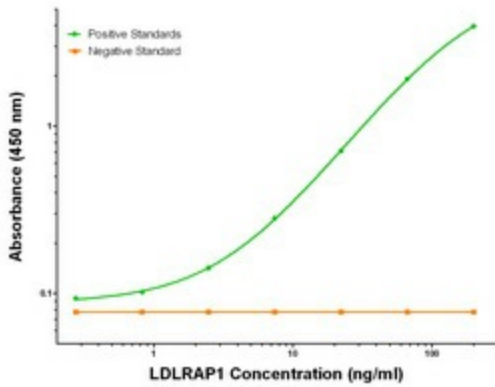
Product data:

Product Type:	Primary Antibodies
Clone Name:	OTI2B2
Applications:	ELISA, LMNX
Recommended Dilution:	1:100 - 1:1000
Reactivity:	Human, Mouse, Rat
Host:	Mouse
Isotype:	IgG1
Clonality:	Monoclonal
Immunogen:	Full length human recombinant protein of human LDLRAP1 (NM_015627) produced in HEK293T cell.
Formulation:	Stored in PBS (pH 7.4) containing 0.05% sodium azide and up to 5% trehalose
Concentration:	0.5 mg/ml
Conjugation:	Unconjugated
Storage:	Store at -20°C. Avoid repeat freeze/thaw cycles.
Stability:	Stable for 12 months from date of receipt.
Gene Name:	low density lipoprotein receptor adaptor protein 1
Database Link:	NP_056442 Entrez Gene 100017 MouseEntrez Gene 500564 RatEntrez Gene 26119 Human Q5SW96
Synonyms:	ARH; ARH1; ARH2; FHCB1; FHCB2
Matched ELISA Pair:	TA700146, TA700147, TA700148, TA700149
Protein Families:	Druggable Genome
Protein Pathways:	Endocytosis

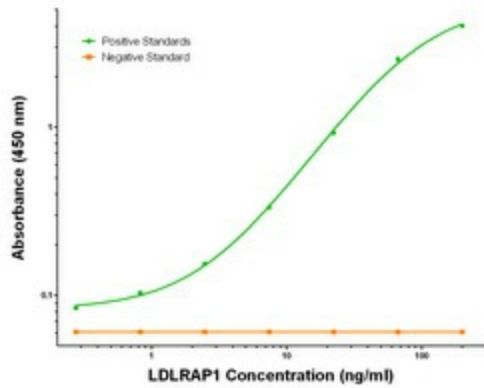


[View online »](#)

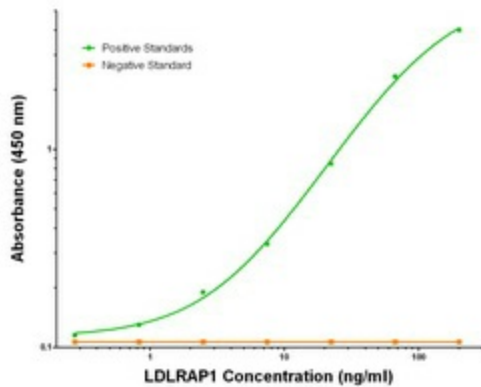
Product images:



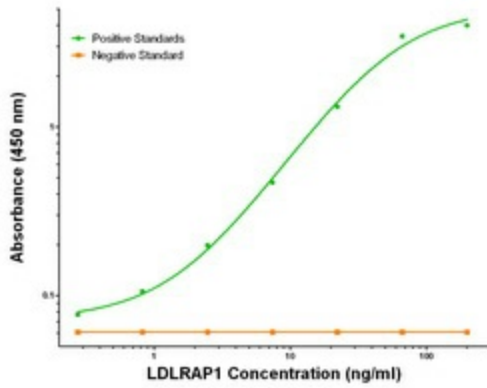
LDLRAP1 Elisa with 2B2 Capture (TA600146) and 1F3 Detection ([TA700146]) Antibodies. Substrate used: Recombinant Human LDLRAP1 ([TP306643])



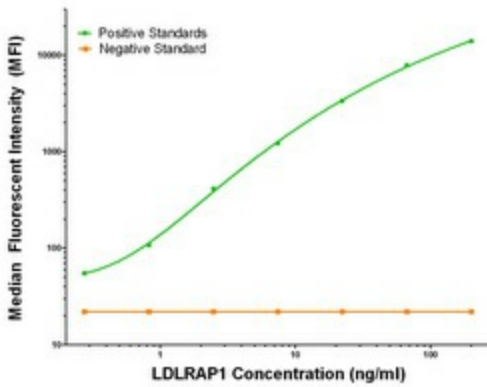
LDLRAP1 Elisa with 2B2 Capture (TA600146) and 4B10 Detection ([TA700148]) Antibodies. Substrate used: Recombinant Human LDLRAP1 ([TP306643])



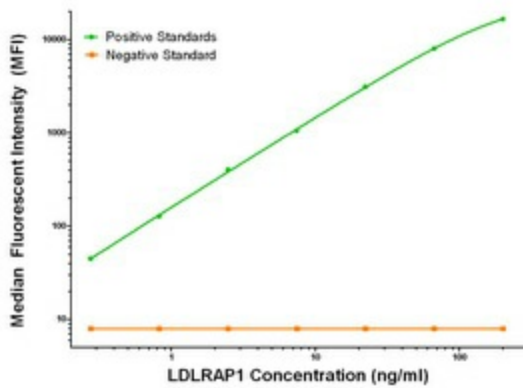
LDLRAP1 Elisa with 2B2 Capture (TA600146) and 5A12 Detection ([TA700149]) Antibodies. Substrate used: Recombinant Human LDLRAP1 ([TP306643])



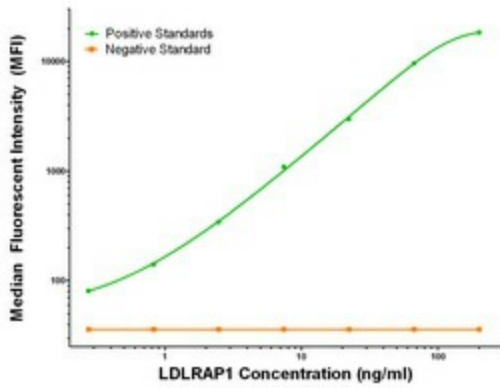
LDLRAP1 Elisa with 2B2 Capture (TA600146) and 7G2 Detection ([TA700147]) Antibodies. Substrate used: Recombinant Human LDLRAP1 ([TP306643])



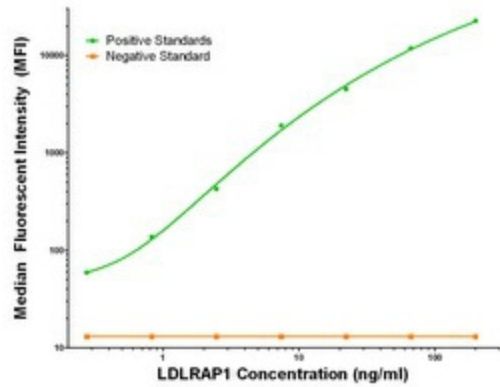
LDLRAP1 Luminex Elisa with 2B2 Capture (TA600146) and 1F3 Detection ([TA700146]) Antibodies. Substrate used: Recombinant Human LDLRAP1 ([TP306643])



LDLRAP1 Luminex Elisa with 2B2 Capture (TA600146) and 4B10 Detection ([TA700148]) Antibodies. Substrate used: Recombinant Human LDLRAP1 ([TP306643])



LDLRAP1 Luminex Elisa with 2B2 Capture (TA600146) and 5A12 Detection ([TA700149]) Antibodies. Substrate used: Recombinant Human LDLRAP1 ([TP306643])



LDLRAP1 Luminex Elisa with 2B2 Capture (TA600146) and 7G2 Detection ([TA700147]) Antibodies. Substrate used: Recombinant Human LDLRAP1 ([TP306643])