

## Product datasheet for **TA600145**

### Prolactin (PRL) Mouse Monoclonal Capture Antibody [Clone ID: OTI2B7]

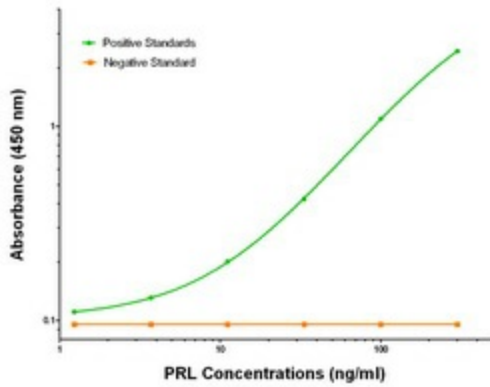
#### Product data:

Product Type:	Primary Antibodies
Clone Name:	OTI2B7
Applications:	ELISA, LMNX
Recommended Dilution:	1:100 - 1:1000
Reactivity:	Human
Host:	Mouse
Isotype:	IgG1
Clonality:	Monoclonal
Immunogen:	Full length human recombinant protein of human PRL (NM_000948) produced in HEK293T cell.
Formulation:	Stored in PBS (pH 7.4) containing 0.05% sodium azide and up to 5% trehalose
Concentration:	0.5 mg/ml
Conjugation:	Unconjugated
Storage:	Store at -20°C. Avoid repeat freeze/thaw cycles.
Stability:	Stable for 12 months from date of receipt.
Gene Name:	prolactin
Database Link:	<a href="#">NP_000939</a> <a href="#">Entrez Gene 5617 Human P01236</a>
Synonyms:	GHA1
Matched ELISA Pair:	TA700145
Protein Families:	Druggable Genome, Secreted Protein
Protein Pathways:	Cytokine-cytokine receptor interaction, Jak-STAT signaling pathway, Neuroactive ligand-receptor interaction

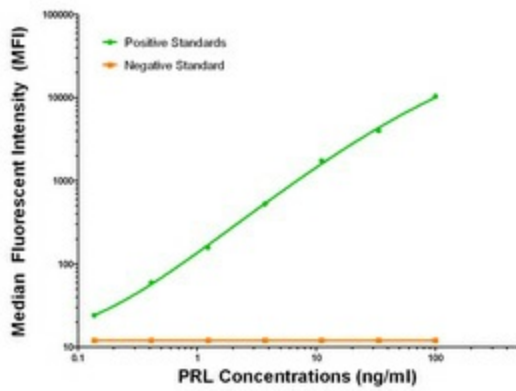


[View online »](#)

Product images:



PRL Elisa with 2B7 Capture (TA600145) and 6B1 Detection ([TA700145]) Antibodies. Substrate used: Recombinant Human PRL ([TP305627])



PRL Luminex Elisa with 2B7 Capture (TA600145) and 6B1 Detection ([TA700145]) Antibodies. Substrate used: Recombinant Human PRL ([TP305627])