

## Product datasheet for **TA600144**

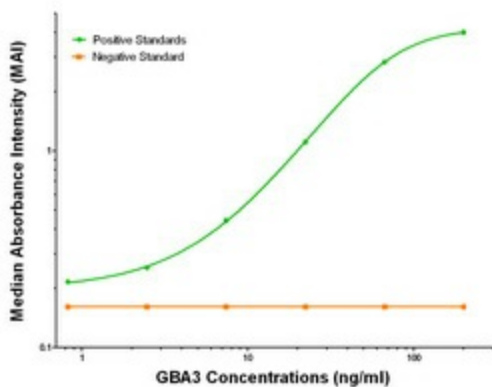
### GBA3 Mouse Monoclonal Capture Antibody [Clone ID: OTI1F1]

#### Product data:

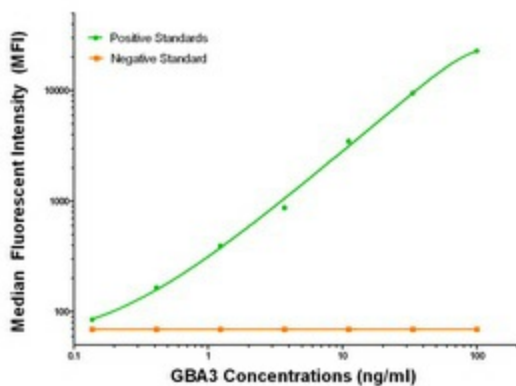
|                       |  |
|-----------------------|--|
| Product Type:         | Primary Antibodies   |
| Clone Name:           | OTI1F1   |
| Applications:         | ELISA, LMNX  |
| Recommended Dilution: | 1:100 - 1:1000   |
| Reactivity:           | Human  |
| Host:                 | Mouse  |
| Isotype:              | IgG1   |
| Clonality:            | Monoclonal   |
| Immunogen:            | Full length human recombinant protein of human HPGD (NM_020973) produced in HEK293T cell.      |
| Formulation:          | Stored in PBS (pH 7.4) containing 0.05% sodium azide and up to 5% trehalose                    |
| Concentration:        | 0.5 mg/ml  |
| Conjugation:          | Unconjugated   |
| Storage:              | Store at -20°C.<br>Avoid repeat freeze/thaw cycles.  |
| Stability:            | Stable for 12 months from date of receipt.   |
| Gene Name:            | glucosylceramidase beta 3 (gene/pseudogene)  |
| Database Link:        | <a href="#">NP_066024</a><br><a href="#">Entrez Gene 57733 Human</a><br><a href="#">Q9H227</a> |
| Synonyms:             | CBG; CBGL1; GLUC; KLRP   |
| Matched ELISA Pair:   | TA700050   |
| Protein Pathways:     | Cyanoamino acid metabolism, Starch and sucrose metabolism                                      |



[View online »](#)

**Product images:**


GBA3 ELISA with 1F1 Capture (TA600144) and Anti-Tag 1B12 Detection ([TA700050]) Antibodies. Substrate used: Recombinant Human GBA3 ([TP311035])



GBA3 Luminex with 1F1 Capture (TA600144) and Anti-Tag 1B12 Detection ([TA700050]) Antibodies. Substrate used: Recombinant Human GBA3 ([TP311035])