

## Product datasheet for **TA600130**

### SPR Mouse Monoclonal Capture Antibody [Clone ID: OTI3E3]

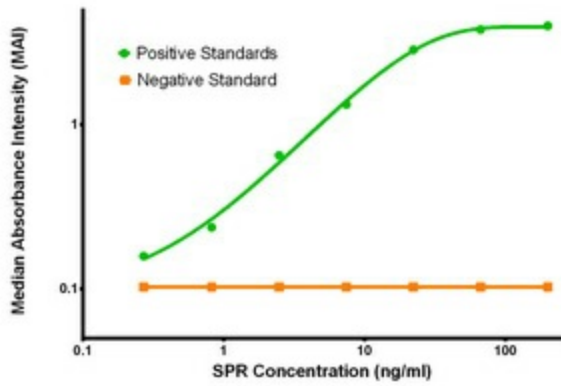
#### Product data:

Product Type:	Primary Antibodies
Clone Name:	OTI3E3
Applications:	ELISA, LMNX
Recommended Dilution:	1:100 - 1:1000
Reactivity:	Human
Host:	Mouse
Isotype:	IgG1
Clonality:	Monoclonal
Immunogen:	Full length human recombinant protein of human SPR (NP_003115) produced in HEK293T cell.
Formulation:	Stored in PBS (pH 7.4) containing 0.05% sodium azide and up to 5% trehalose
Concentration:	0.5 mg/ml
Conjugation:	Unconjugated
Storage:	Store at -20°C. Avoid repeat freeze/thaw cycles.
Stability:	Stable for 12 months from date of receipt.
Gene Name:	sepiapterin reductase
Database Link:	<a href="#">NP_003115</a> <a href="#">Entrez Gene 6697 Human P35270</a>
Synonyms:	SDR38C1
Matched ELISA Pair:	TA700127
Protein Families:	Druggable Genome
Protein Pathways:	Folate biosynthesis, Metabolic pathways

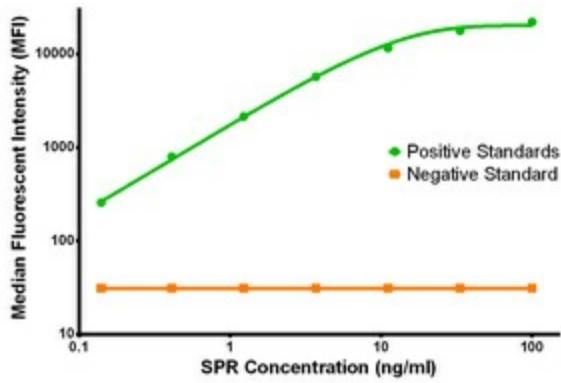


[View online »](#)

Product images:



SPR ELISA with 3E3 Capture (TA600130) and 3C8 Detection ([TA700127]) Antibodies. Substrate used: Recombinant Human SPR ([TP300619])



SPR Luminex with 3E3 Capture (TA600130) and 3C8 Detection ([TA700127]) Antibodies. Substrate used: Recombinant Human SPR ([TP300619])