

Product datasheet for **TA600121**

Spermine synthase (SMS) Mouse Monoclonal Capture Antibody [Clone ID: OTI5C12]

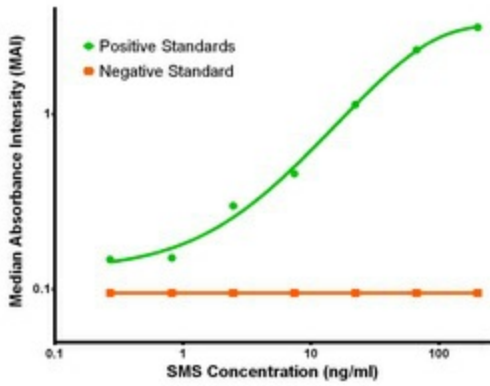
Product data:

Product Type:	Primary Antibodies
Clone Name:	OTI5C12
Applications:	ELISA, LMNX
Recommended Dilution:	1:100 - 1:1000
Reactivity:	Human, Mouse, Rat
Host:	Mouse
Isotype:	IgG1
Clonality:	Monoclonal
Immunogen:	Full length human recombinant protein of human SMS (NP_004586) produced in HEK293T cell.
Formulation:	Stored in PBS (pH 7.4) containing 0.05% sodium azide and up to 5% trehalose
Concentration:	0.5 mg/ml
Conjugation:	Unconjugated
Storage:	Store at -20°C. Avoid repeat freeze/thaw cycles.
Stability:	Stable for 12 months from date of receipt.
Gene Name:	spermine synthase
Database Link:	NP_004586 Entrez Gene 20603 Mouse Entrez Gene 363469 Rat Entrez Gene 6611 Human P52788
Synonyms:	MRSR; SPMSY; SpS; SRS
Matched ELISA Pair:	TA700119, TA700121, TA700140
Protein Pathways:	Arginine and proline metabolism, beta-Alanine metabolism, Cysteine and methionine metabolism, Glutathione metabolism, Metabolic pathways

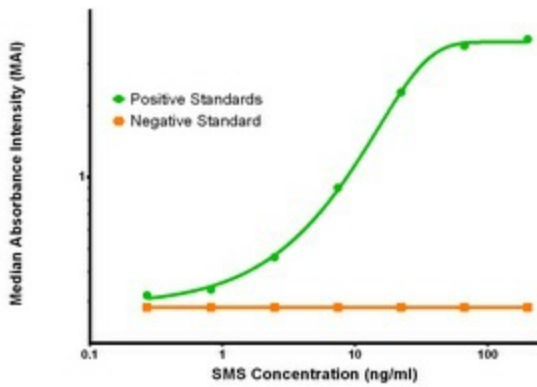


[View online »](#)

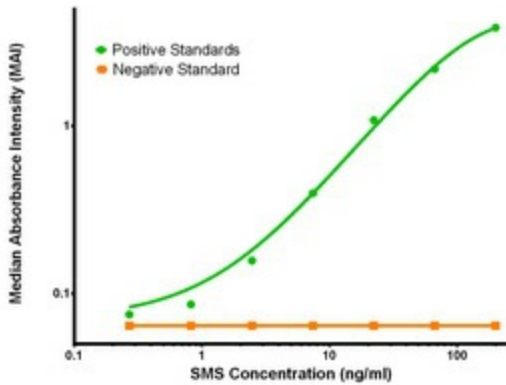
Product images:



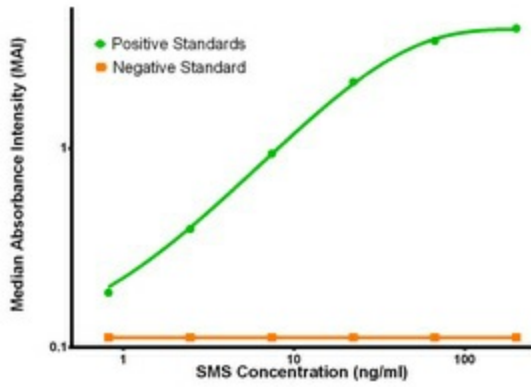
SMS ELISA with 5C12 Capture (TA600121) and 2G8 Detection ([TA700120]) Antibodies. Substrate used: Recombinant Human SMS ([TP300619])



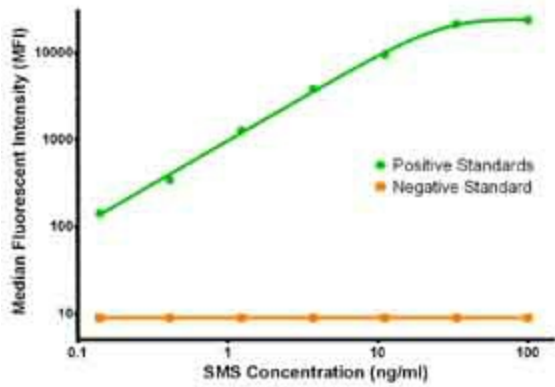
SMS ELISA with 5C12 Capture (TA600121) and 3C9 Detection ([TA700121]) Antibodies. Substrate used: Recombinant Human SMS ([TP300619])



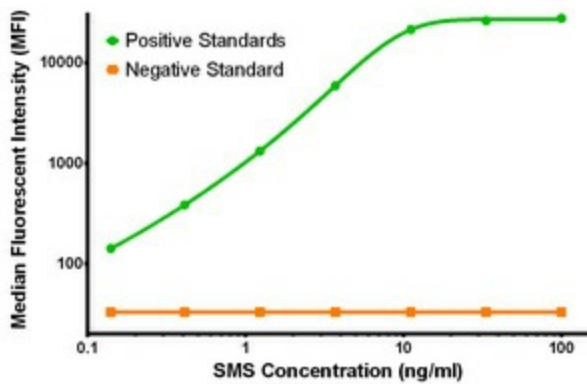
SMS ELISA with 5C12 Capture (TA600121) and 5E5 Detection ([TA700140]) Antibodies. Substrate used: Recombinant Human SMS ([TP300619])



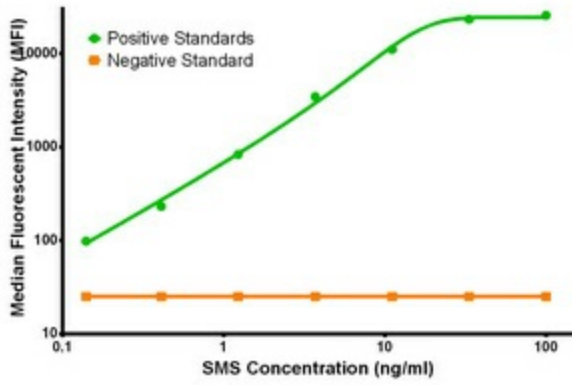
SMS ELISA with 5C12 Capture (TA600121) and 1G7 Detection ([TA700119]) Antibodies. Substrate used: Recombinant Human SMS ([TP300619])



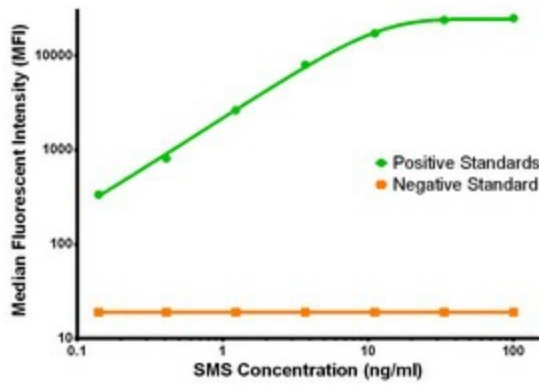
SMS Luminex with 5C12 Capture (TA600121) and 2G8 Detection ([TA700120]) Antibodies. Substrate used: Recombinant Human SMS ([TP300619])



SMS Luminex with 5C12 Capture (TA600121) and 3C9 Detection ([TA700121]) Antibodies. Substrate used: Recombinant Human SMS ([TP300619])



SMS Luminex with 5C12 Capture (TA600121) and 5E5 Detection ([TA700140]) Antibodies. Substrate used: Recombinant Human SMS ([TP300619])



SMS Luminex with 5C12 Capture (TA600121) and 1G7 Detection ([TA700119]) Antibodies. Substrate used: Recombinant Human SMS ([TP300619])