

Product datasheet for **TA600120**

Spermine synthase (SMS) Mouse Monoclonal Capture Antibody [Clone ID: OTI3C9]

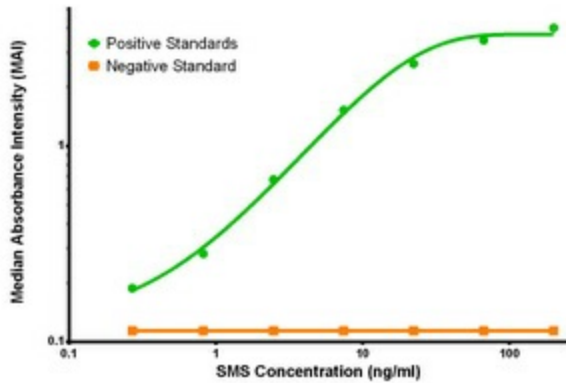
Product data:

Product Type:	Primary Antibodies
Clone Name:	OTI3C9
Applications:	ELISA, LMNX
Recommended Dilution:	1:100 - 1:1000
Reactivity:	Human, Mouse, Rat
Host:	Mouse
Isotype:	IgG1
Clonality:	Monoclonal
Immunogen:	Full length human recombinant protein of human SMS(NP_004586) produced in HEK293T cell
Formulation:	Stored in PBS (pH 7.4) containing 0.05% sodium azide and up to 5% trehalose
Concentration:	0.5 mg/ml
Conjugation:	Unconjugated
Storage:	Store at -20°C. Avoid repeat freeze/thaw cycles.
Stability:	Stable for 12 months from date of receipt.
Gene Name:	spermine synthase
Database Link:	NP_004586 Entrez Gene 20603 Mouse Entrez Gene 363469 Rat Entrez Gene 6611 Human P52788
Synonyms:	MRSR; SPMSY; SpS; SRS
Matched ELISA Pair:	TA700120, TA700122
Protein Pathways:	Arginine and proline metabolism, beta-Alanine metabolism, Cysteine and methionine metabolism, Glutathione metabolism, Metabolic pathways

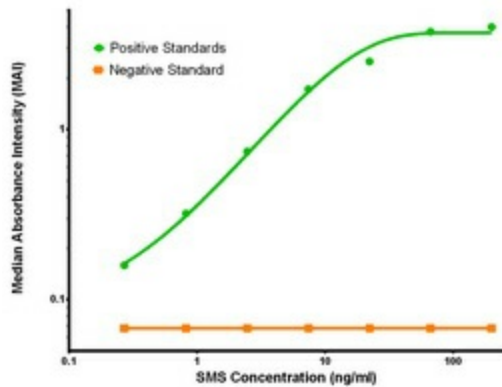


[View online »](#)

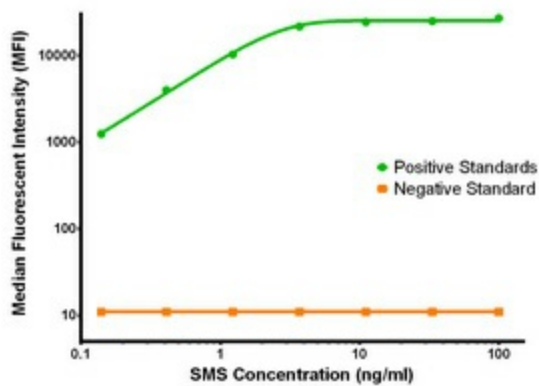
Product images:



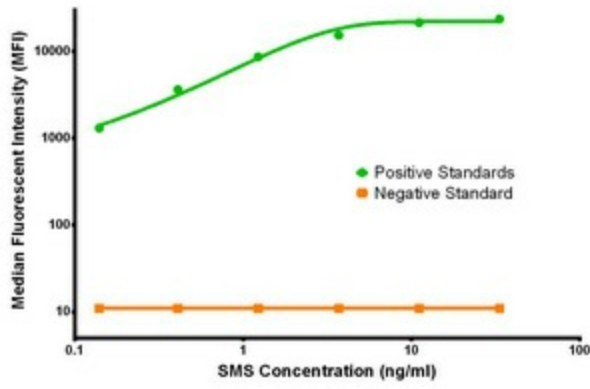
SMS ELISA with 3C9 Capture (TA600120) and 2G8 Detection ([TA700120]) Antibodies. Substrate used: Recombinant Human SMS ([TP300619])



SMS ELISA with 3C9 Capture (TA600120) and 5C12 Detection ([TA700122]) Antibodies. Substrate used: Recombinant Human SMS ([TP300619])



SMS Luminex with 3C9 Capture (TA600120) and 2G8 Detection ([TA700120]) Antibodies. Substrate used: Recombinant Human SMS ([TP300619])



SMS Luminex with 3C9 Capture (TA600120) and 5C12 Detection ([TA700122]) Antibodies. Substrate used: Recombinant Human SMS ([TP300619])