

## Product datasheet for **TA600118**

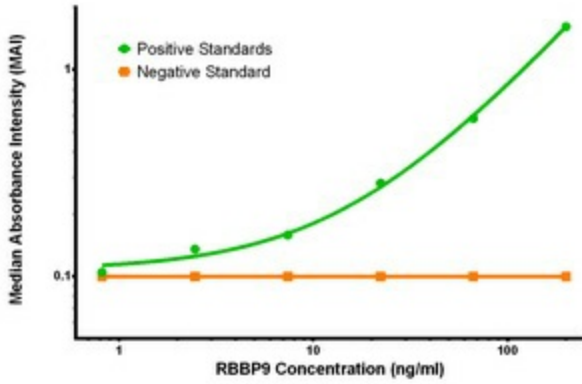
### **RBBP9 Mouse Monoclonal Capture Antibody [Clone ID: OTI4G9]**

#### **Product data:**

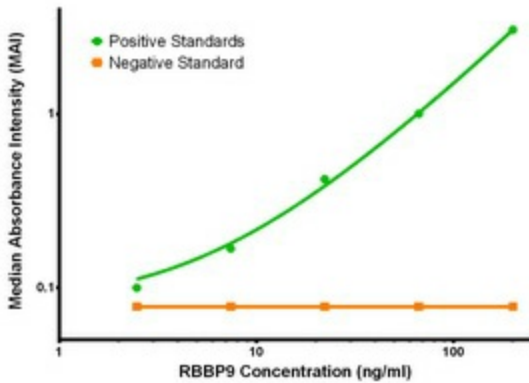
Product Type:	Primary Antibodies
Clone Name:	OTI4G9
Applications:	ELISA, LMNX
Recommended Dilution:	1:100 - 1:1000
Reactivity:	Human, Mouse, Rat
Host:	Mouse
Isotype:	IgG1
Clonality:	Monoclonal
Immunogen:	Full length human recombinant protein of human RBBP9 (NM_006606) produced in HEK293T cell.
Formulation:	Stored in PBS (pH 7.4) containing 0.05% sodium azide and up to 5% trehalose
Concentration:	0.5 mg/ml
Conjugation:	Unconjugated
Storage:	Store at -20°C. Avoid repeat freeze/thaw cycles.
Stability:	Stable for 12 months from date of receipt.
Gene Name:	RB binding protein 9, serine hydrolase
Database Link:	<a href="#">NP_006597</a> <a href="#">Entrez Gene 10741 Human</a> <a href="#">O75884</a>
Synonyms:	BOG; RBBP10
Matched ELISA Pair:	TA700115, TA700117



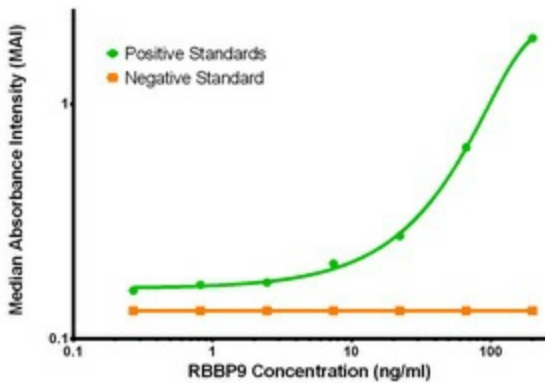
[View online »](#)

**Product images:**


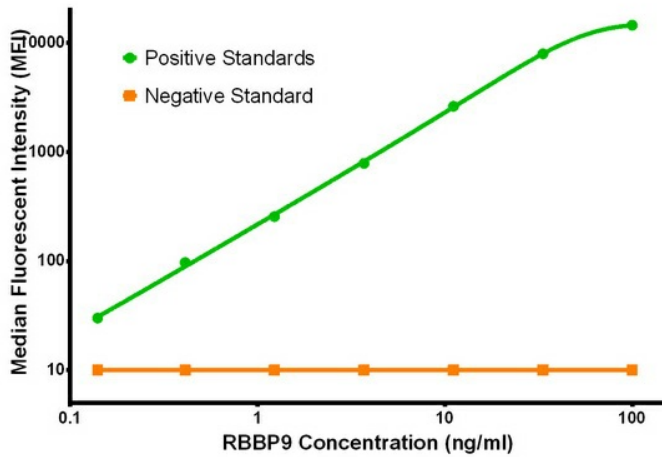
RBBP9 ELISA with 4G9 Capture (TA600118) and 2G2 Detection ([TA700116]) Antibodies. Substrate used: Recombinant Human RBBP9 ([TP302090])



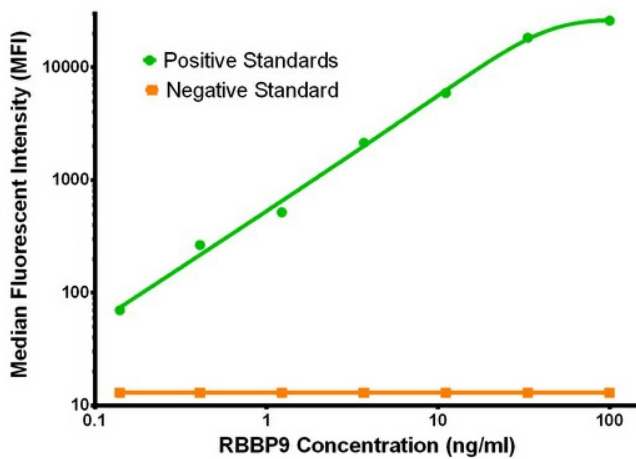
RBBP9 ELISA with 4G9 Capture (TA600118) and 1C10 Detection ([TA700115]) Antibodies. Substrate used: Recombinant Human RBBP9 ([TP302090])



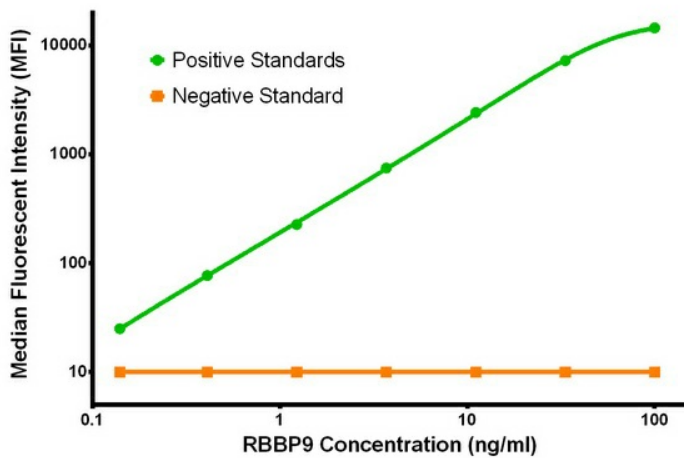
RBBP9 ELISA with 4G9 Capture (TA600118) and 4E1 Detection ([TA700117]) Antibodies. Substrate used: Recombinant Human RBBP9 ([TP302090])



RBBP9 Luminex with 4G9 Capture (TA600118) and 2G2 Detection ([TA700116]) Antibodies. Substrate used: Recombinant Human RBBP9 ([TP302090])



RBBP9 Luminex with 4G9 Capture (TA600118) and 1C10 Detection ([TA700115]) Antibodies. Substrate used: Recombinant Human RBBP9 ([TP302090])



RBBP9 Luminex with 4G9 Capture (TA600118) and 4E1 Detection ([TA700117]) Antibodies. Substrate used: Recombinant Human RBBP9 ([TP302090])