

## Product datasheet for **TA600114**

### PON1 Mouse Monoclonal Capture Antibody [Clone ID: OTI2D4]

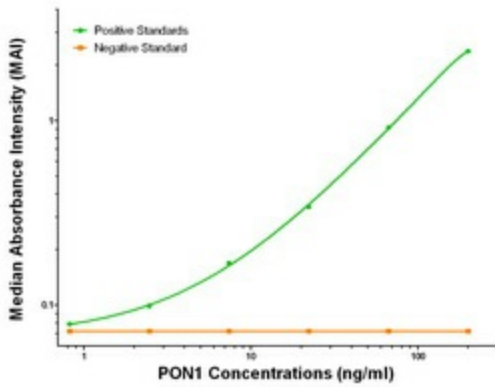
#### Product data:

Product Type:	Primary Antibodies
Clone Name:	OTI2D4
Applications:	ELISA, LMNX
Recommended Dilution:	1:100 - 1:1000
Reactivity:	Human
Host:	Mouse
Isotype:	IgG1
Clonality:	Monoclonal
Immunogen:	Full length human recombinant protein of human HPGD (NM_000446) produced in HEK293T cell.
Formulation:	Stored in PBS (pH 7.4) containing 0.05% sodium azide and up to 5% trehalose
Concentration:	0.5 mg/ml
Conjugation:	Unconjugated
Storage:	Store at -20°C. Avoid repeat freeze/thaw cycles.
Stability:	Stable for 12 months from date of receipt.
Gene Name:	paraoxonase 1
Database Link:	<a href="#">NP_000437</a> <a href="#">Entrez Gene 5444 Human</a> <a href="#">P27169</a>
Synonyms:	ESA; MVCD5; PON
Matched ELISA Pair:	TA700112
Protein Families:	Druggable Genome, Secreted Protein
Protein Pathways:	Metabolic pathways

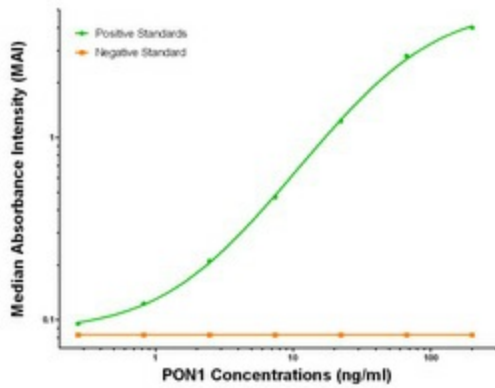


[View online »](#)

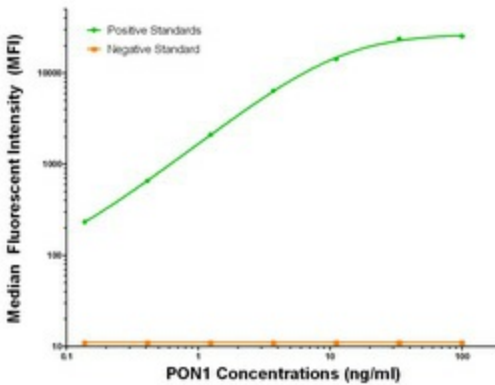
Product images:



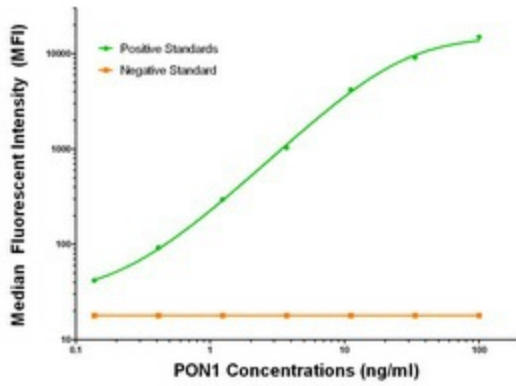
PON1 ELISA with 2D4 Capture (TA600114) and 2A6 Detection ([TA700112]) Antibodies. Substrate used: Recombinant Human PON1 ([TP310356])



PON1 ELISA with 2D4 Capture (TA600114) and 1F7 Detection ([TA700113]) Antibodies. Substrate used: Recombinant Human PON1 ([TP310356])



PON1 Luminex with 2D4 Capture (TA600114) and 2A6 Detection ([TA700112]) Antibodies. Substrate used: Recombinant Human PON1 ([TP310356])



PON1 Luminex with 2D4 Capture (TA600114) and 1F7 Detection ([TA700113]) Antibodies. Substrate used: Recombinant Human PON1 ([TP310356])