

## Product datasheet for **TA600111**

### PLK1 Mouse Monoclonal Capture Antibody [Clone ID: OTI8C12]

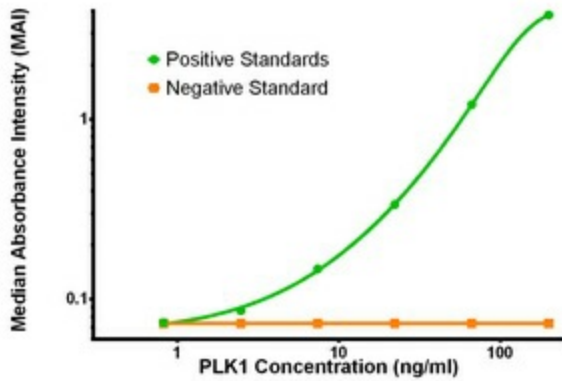
#### Product data:

Product Type:	Primary Antibodies
Clone Name:	OTI8C12
Applications:	ELISA, LMNX
Recommended Dilution:	1:100 - 1:1000
Reactivity:	Human, Mouse, Rat
Host:	Mouse
Isotype:	IgG1
Clonality:	Monoclonal
Immunogen:	Protein expressed in 293T cell transfected with human PLK1 expression vector
Formulation:	Stored in PBS (pH 7.4) containing 0.05% sodium azide and up to 5% trehalose
Concentration:	0.5 mg/ml
Conjugation:	Unconjugated
Storage:	Store at -20°C. Avoid repeat freeze/thaw cycles.
Stability:	Stable for 12 months from date of receipt.
Gene Name:	polo like kinase 1
Database Link:	<a href="#">NP_005021</a> <a href="#">Entrez Gene 18817 Mouse</a> <a href="#">Entrez Gene 25515 Rat</a> <a href="#">Entrez Gene 5347 Human</a> <a href="#">P53350</a>
Synonyms:	PLK; STPK13
Matched ELISA Pair:	TA700111, TA700137, TA700138, TA700139
Protein Families:	Druggable Genome, Protein Kinase
Protein Pathways:	Cell cycle, Oocyte meiosis, Progesterone-mediated oocyte maturation

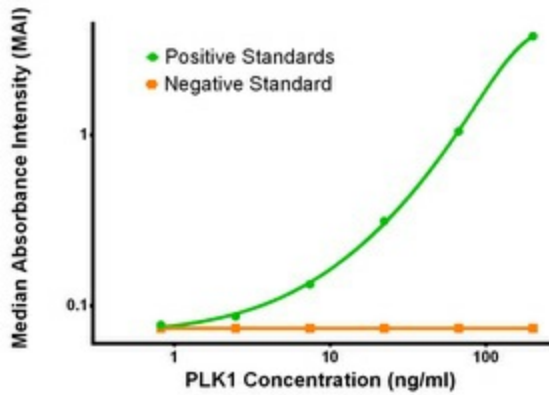


[View online »](#)

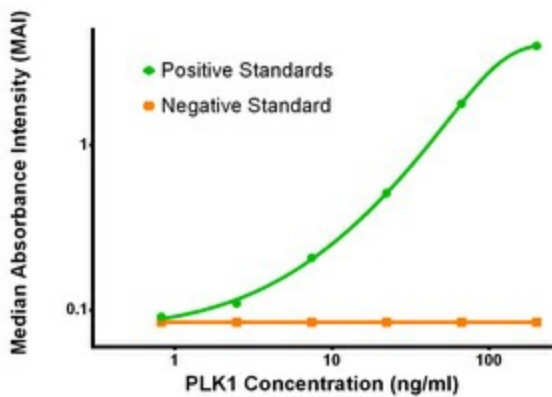
Product images:



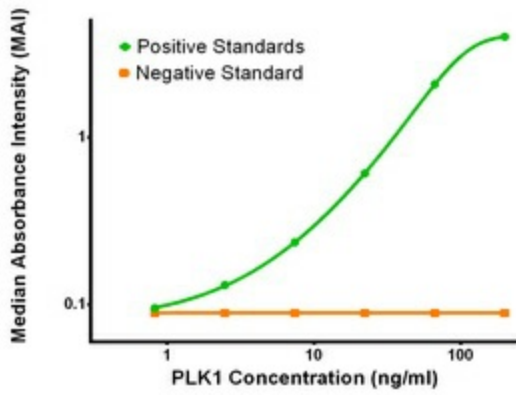
PLK1 ELISA with 8C12 Capture (TA600111) and 1A2 Detection ([TA700111]) Antibodies. Substrate used: Recombinant Human PLK1 ([TP301795])



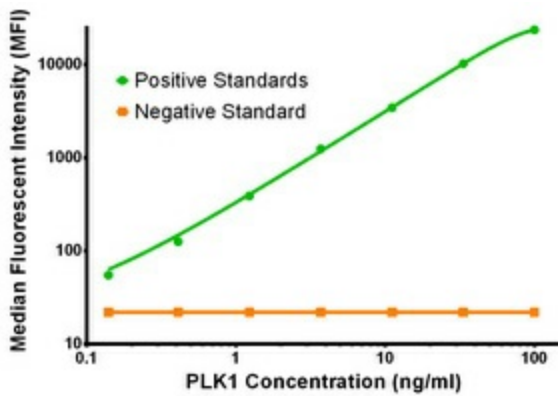
PLK1 ELISA with 8C12 Capture (TA600111) and 1D4 Detection ([TA700137]) Antibodies. Substrate used: Recombinant Human PLK1 ([TP301795])



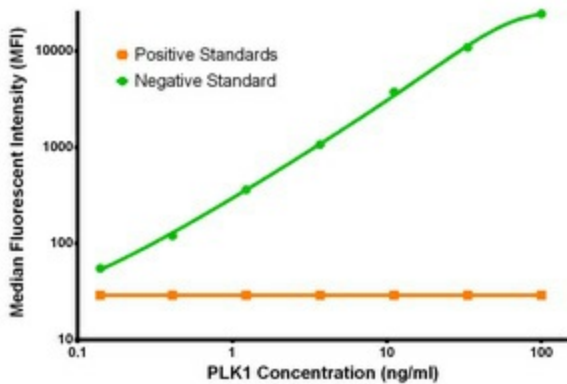
PLK1 ELISA with 8C12 Capture (TA600111) and 5C1 Detection ([TA700138]) Antibodies. Substrate used: Recombinant Human PLK1 ([TP301795])



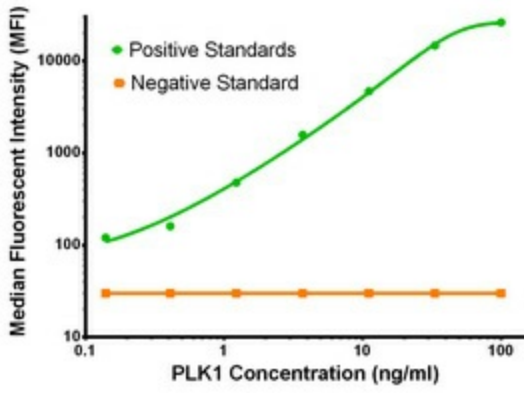
PLK1 ELISA with 8C12 Capture (TA600111) and 6C6 Detection ([TA700139]) Antibodies. Substrate used: Recombinant Human PLK1 ([TP301795])



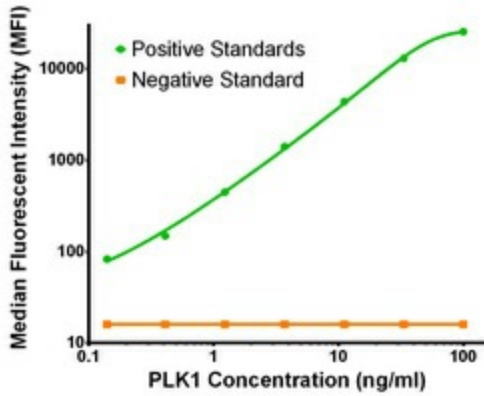
PLK1 Luminex with 8C12 Capture (TA600111) and 1A2 Detection ([TA700111]) Antibodies. Substrate used: Recombinant Human PLK1 ([TP301795])



PLK1 Luminex with 8C12 Capture (TA600111) and 1D4 Detection ([TA700137]) Antibodies. Substrate used: Recombinant Human PLK1 ([TP301795])



PLK1 Luminex with 8C12 Capture (TA600111) and 5C1 Detection ([TA700138]) Antibodies. Substrate used: Recombinant Human PLK1 ([TP302090])



PLK1 Luminex with 8C12 Capture (TA600111) and 6C6 Detection ([TA700139]) Antibodies. Substrate used: Recombinant Human PLK1 ([TP302090])