

## Product datasheet for **TA600105**

### c-Jun (JUN) Mouse Monoclonal Capture Antibody [Clone ID: OTI1G4]

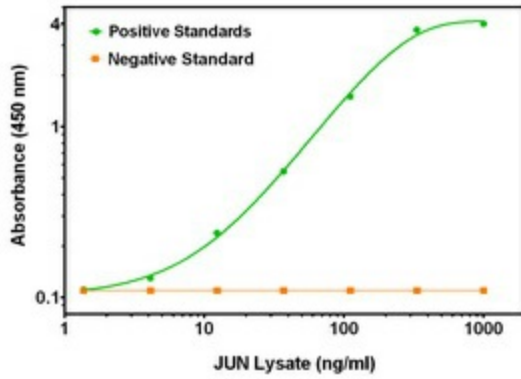
#### Product data:

Product Type:	Primary Antibodies
Clone Name:	OTI1G4
Applications:	ELISA, LMNX
Recommended Dilution:	1:100 - 1:1000
Reactivity:	Human, Mouse, Rat
Host:	Mouse
Isotype:	IgG1
Clonality:	Monoclonal
Immunogen:	Full length human recombinant protein of human JUN (NM_002228) produced in HEK293T cells.
Formulation:	Stored in PBS (pH 7.4) containing 0.05% sodium azide and up to 5% trehalose
Concentration:	0.5 mg/ml
Conjugation:	Unconjugated
Storage:	Store at -20°C. Avoid repeat freeze/thaw cycles.
Stability:	Stable for 12 months from date of receipt.
Gene Name:	Jun proto-oncogene, AP-1 transcription factor subunit
Database Link:	<a href="#">NP_002219</a> <a href="#">Entrez Gene 16476 Mouse</a> <a href="#">Entrez Gene 24516 Rat</a> <a href="#">Entrez Gene 3725 Human</a> <a href="#">P05412</a>
Synonyms:	AP-1; AP1; c-Jun
Matched ELISA Pair:	TA700106
Protein Families:	Druggable Genome, ES Cell Differentiation/IPS, Transcription Factors
Protein Pathways:	B cell receptor signaling pathway, Colorectal cancer, Epithelial cell signaling in Helicobacter pylori infection, ErbB signaling pathway, Focal adhesion, GnRH signaling pathway, MAPK signaling pathway, Neurotrophin signaling pathway, Pathways in cancer, Renal cell carcinoma, T cell receptor signaling pathway, Toll-like receptor signaling pathway, Wnt signaling pathway

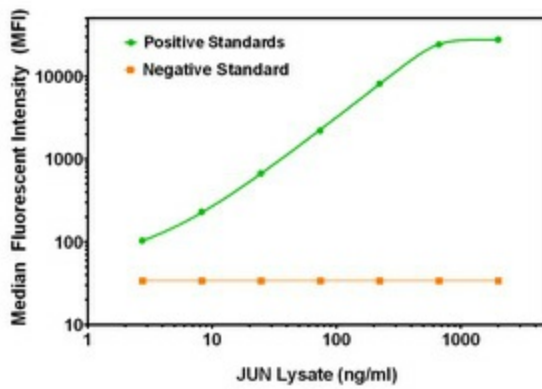


[View online »](#)

Product images:



JUN ELISA with 1G4 Capture (TA600105) and 3E2 Detection ([TA700106]) Antibodies. Substrate used: Recombinant Human JUN ([LY400825])



JUN Luminex with 1G4 Capture (TA600105) and 3E2 Detection ([TA700106]) Antibodies. Substrate used: Recombinant Human JUN ([LY400825])