

## Product datasheet for **TA600104**

### ID3 Mouse Monoclonal Capture Antibody [Clone ID: OTI15F4]

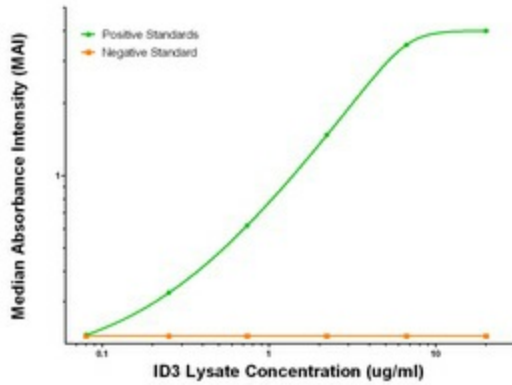
#### Product data:

Product Type:	Primary Antibodies
Clone Name:	OTI15F4
Applications:	ELISA, LMNX
Recommended Dilution:	1:100 - 1:1000
Reactivity:	Human, Mouse, Rat
Host:	Mouse
Isotype:	IgG1
Clonality:	Monoclonal
Immunogen:	Full length human recombinant protein of human ID3 (NM_002167) produced in HEK293T cell.
Formulation:	Stored in PBS (pH 7.4) containing 0.05% sodium azide and up to 5% trehalose
Concentration:	0.5 mg/ml
Conjugation:	Unconjugated
Storage:	Store at -20°C. Avoid repeat freeze/thaw cycles.
Stability:	Stable for 12 months from date of receipt.
Gene Name:	inhibitor of DNA binding 3, HLH protein
Database Link:	<a href="#">NP_002158</a> <a href="#">Entrez Gene 3399 Human</a> <a href="#">Q02535</a>
Synonyms:	bHLHb25; HEIR-1
Matched ELISA Pair:	TA700103, TA700104
Protein Families:	Druggable Genome, ES Cell Differentiation/IPS, Transcription Factors
Protein Pathways:	TGF-beta signaling pathway

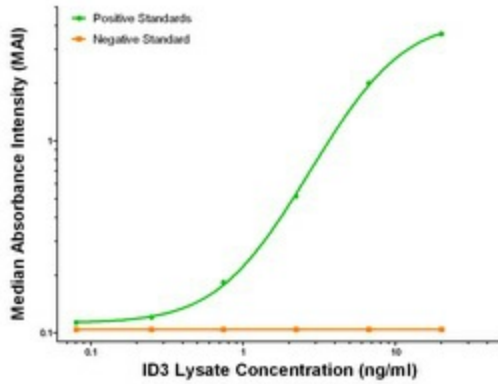


[View online »](#)

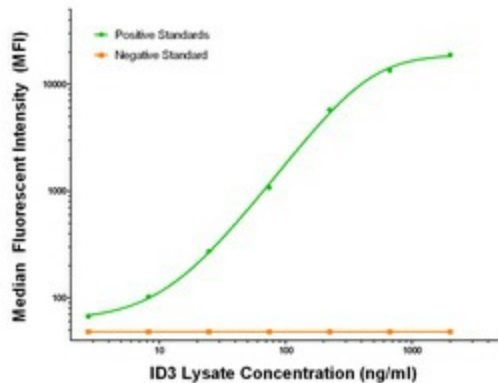
Product images:



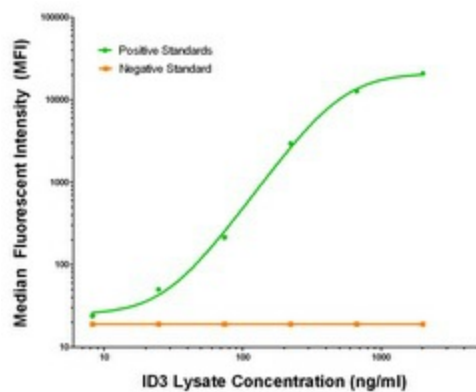
ID3 ELISA with 15F4 Capture (TA600104) and 5C7 Detection ([TA700104]) Antibodies. Substrate used: Recombinant Human ID3 ([TP300583])



ID3 ELISA with 15F4 Capture (TA600104) and 4D1 Detection ([TA700103]) Antibodies. Substrate used: Recombinant Human ID3 ([TP300583])



ID3 Luminex with 15F4 Capture (TA600104) and 5C7 Detection ([TA700104]) Antibodies. Substrate used: Recombinant Human ID3 ([TP300583])



ID3 Luminex with 15F4 Capture (TA600104) and 4D1 Detection ([TA700103]) Antibodies. Substrate used: Recombinant Human ID3 ([TP300583])