

Product datasheet for **TA600099**

Prostaglandin dehydrogenase 1 (HPGD) Mouse Monoclonal Capture Antibody [Clone ID: OTI1C10]

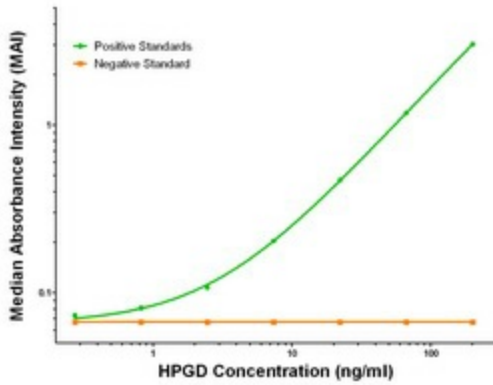
Product data:

Product Type:	Primary Antibodies
Clone Name:	OTI1C10
Applications:	ELISA, LMNX
Recommended Dilution:	1:100 - 1:1000
Reactivity:	Human, Mouse, Rat
Host:	Mouse
Isotype:	IgG1
Clonality:	Monoclonal
Immunogen:	Full length human recombinant protein of human HPGD (NM_000860) produced in HEK293T cell.
Formulation:	Stored in PBS (pH 7.4) containing 0.05% sodium azide and up to 5% trehalose
Concentration:	0.5 mg/ml
Conjugation:	Unconjugated
Storage:	Store at -20°C. Avoid repeat freeze/thaw cycles.
Stability:	Stable for 12 months from date of receipt.
Gene Name:	15-hydroxyprostaglandin dehydrogenase
Database Link:	NP_000851 Entrez Gene 3248 Human P15428
Synonyms:	15-PGDH; PGDH; PGDH1; PHOAR1; SDR36C1
Matched ELISA Pair:	TA700101
Protein Families:	Druggable Genome

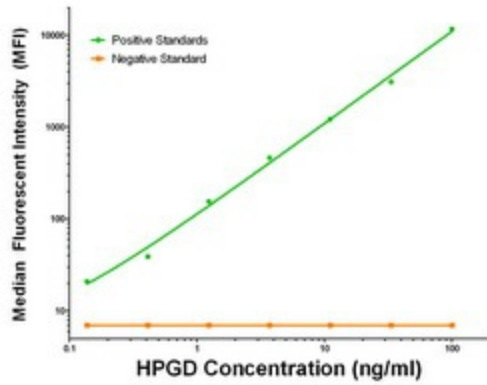


[View online »](#)

Product images:



HPGD ELISA with 1C10 Capture (TA600099) and 2C10 Detection ([TA700101]) Antibodies. Substrate used: Recombinant Human HPGD ([TP304160])



HPGD Luminex with 1C10 Capture (TA600099) and 2C10 Detection ([TA700101]) Antibodies. Substrate used: Recombinant Human HPGD ([TP304160])