

Product datasheet for **TA600098**

GBA3 Mouse Monoclonal Capture Antibody [Clone ID: OTI1C7]

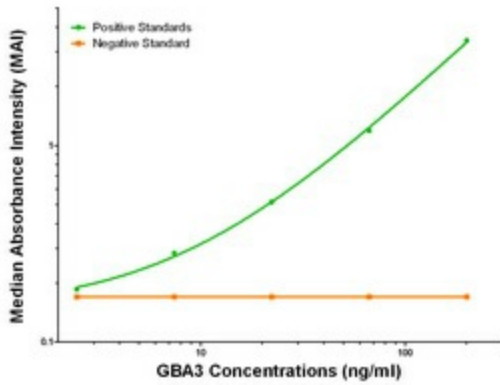
Product data:

Product Type:	Primary Antibodies
Clone Name:	OTI1C7
Applications:	ELISA, LMNX
Recommended Dilution:	1:100 - 1:1000
Reactivity:	Human
Host:	Mouse
Isotype:	IgG1
Clonality:	Monoclonal
Immunogen:	Full length human recombinant protein of human HPGD (NM_020973) produced in HEK293T cell.
Formulation:	Stored in PBS (pH 7.4) containing 0.05% sodium azide and up to 5% trehalose
Concentration:	0.5 mg/ml
Conjugation:	Unconjugated
Storage:	Store at -20°C. Avoid repeat freeze/thaw cycles.
Stability:	Stable for 12 months from date of receipt.
Gene Name:	glucosylceramidase beta 3 (gene/pseudogene)
Database Link:	NP_066024 Entrez Gene 57733 Human Q9H227
Synonyms:	CBG; CBGL1; GLUC; KLRP
Matched ELISA Pair:	TA700050
Protein Pathways:	Cyanoamino acid metabolism, Starch and sucrose metabolism

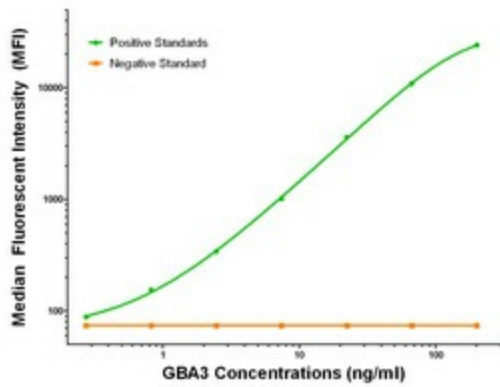


[View online »](#)

Product images:



GBA3 ELISA with 1C7 Capture (TA600098) and Anti-Tag 1B12 Detection ([TA700050]) Antibodies. Substrate used: Recombinant Human GBA3 ([TP311035])



GBA3 Luminex with 1C7 Capture (TA600098) and Anti-Tag 1B12 Detection ([TA700050]) Antibodies. Substrate used: Recombinant Human GBA3 ([TP311035])