

Product datasheet for **TA600097**

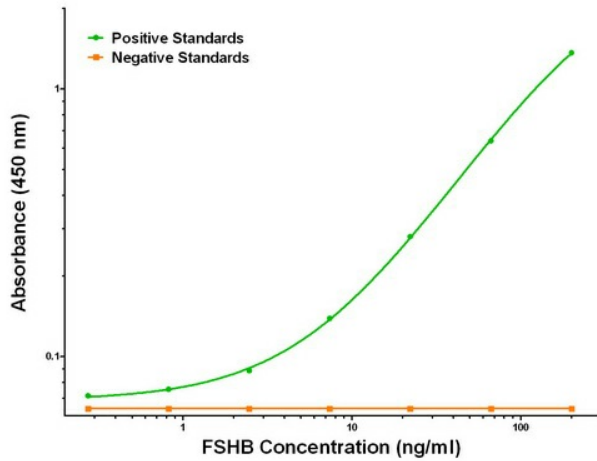
FSH beta (FSHB) Mouse Monoclonal Capture Antibody [Clone ID: OTI4E8]

Product data:

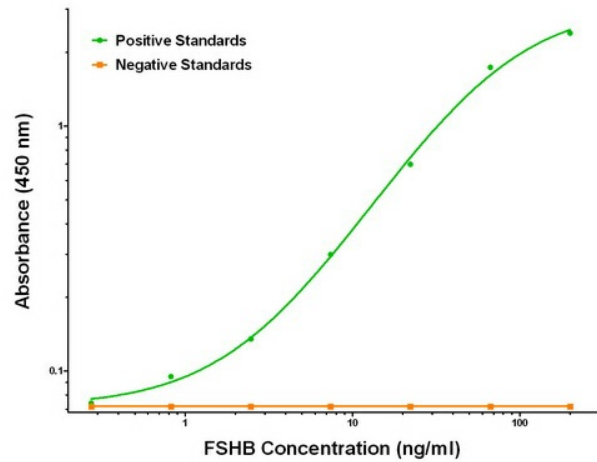
Product Type:	Primary Antibodies
Clone Name:	OTI4E8
Applications:	ELISA, LMNX
Recommended Dilution:	1:100 - 1:1000
Reactivity:	Human, Mouse
Host:	Mouse
Isotype:	IgG1
Clonality:	Monoclonal
Immunogen:	Full length human recombinant protein of human FSHB (NM_000510) produced in HEK293T cell.
Formulation:	Stored in PBS (pH 7.4) containing 0.05% sodium azide and up to 5% trehalose
Concentration:	0.5 mg/ml
Conjugation:	Unconjugated
Storage:	Store at -20°C. Avoid repeat freeze/thaw cycles.
Stability:	Stable for 12 months from date of receipt.
Gene Name:	follicle stimulating hormone subunit beta
Database Link:	NP_000501 Entrez Gene 2488 Human P01225
Synonyms:	HH24
Matched ELISA Pair:	TA700094, TA700096
Protein Families:	Druggable Genome, Secreted Protein
Protein Pathways:	GnRH signaling pathway, Neuroactive ligand-receptor interaction

[View online »](#)

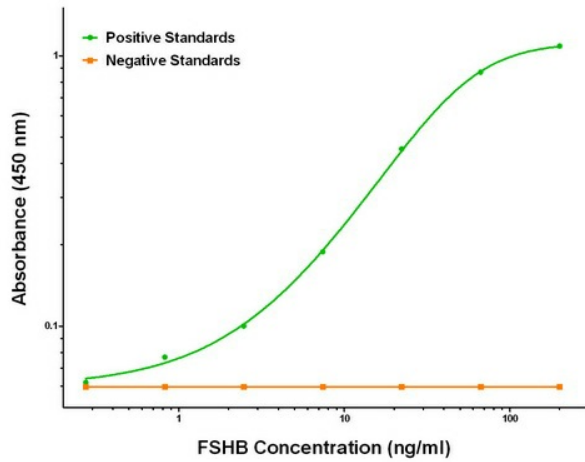
Product images:



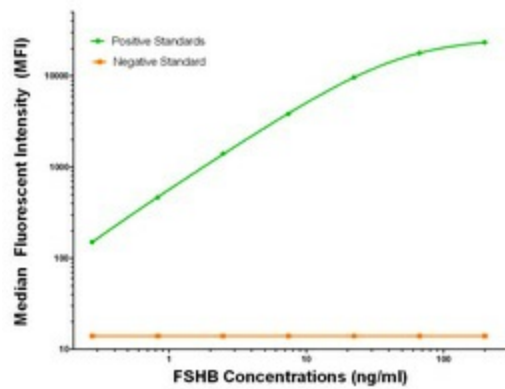
FSHB ELISA with 4E8 Capture (TA600097) and 3A9 Detection ([TA700096]) Antibodies. Substrate used: Recombinant Human FSHB ([TP322666])



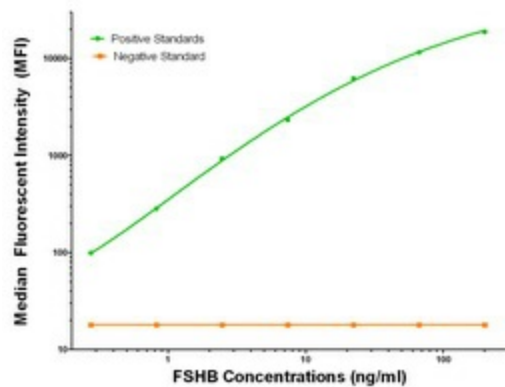
FSHB ELISA with 4E8 Capture (TA600097) and 2E5 Detection ([TA700095]) Antibodies. Substrate used: Recombinant Human FSHB ([TP322666])



FSHB ELISA with 4E8 Capture (TA600097) and 2A6 Detection ([TA700094]) Antibodies. Substrate used: Recombinant Human FSHB ([TP322666])



FSHB Luminex with 4E8 Capture (TA600097) and 3A9 Detection ([TA700096]) Antibodies. Substrate used: Recombinant Human FSHB ([TP322666])



FSHB Luminex with 4E8 Capture (TA600097) and 2E5 Detection ([TA700095]) Antibodies. Substrate used: Recombinant Human FSHB ([TP322666])