

## Product datasheet for **TA600094**

### FSH beta (FSHB) Mouse Monoclonal Capture Antibody [Clone ID: OTI1B2]

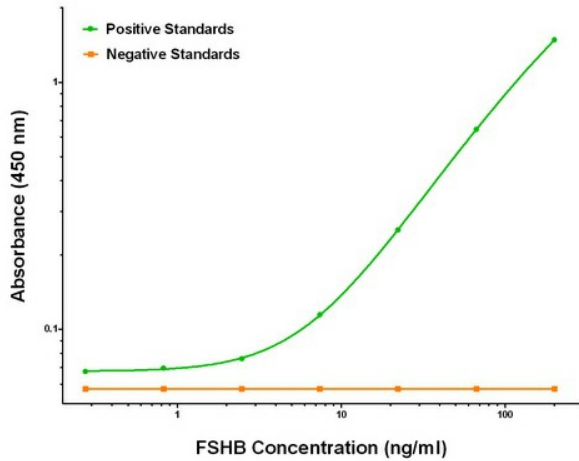
#### Product data:

Product Type:	Primary Antibodies
Clone Name:	OTI1B2
Applications:	ELISA, LMNX
Recommended Dilution:	1:100 - 1:1000
Reactivity:	Human, Mouse
Host:	Mouse
Isotype:	IgG1
Clonality:	Monoclonal
Immunogen:	Full length human recombinant protein of human FSHB (NM_000510) produced in HEK293T cell.
Formulation:	Stored in PBS (pH 7.4) containing 0.05% sodium azide and up to 5% trehalose
Concentration:	0.5 mg/ml
Conjugation:	Unconjugated
Storage:	Store at -20°C. Avoid repeat freeze/thaw cycles.
Stability:	Stable for 12 months from date of receipt.
Gene Name:	follicle stimulating hormone subunit beta
Database Link:	<a href="#">NP_000501</a> <a href="#">Entrez Gene 2488 Human</a> <a href="#">P01225</a>
Synonyms:	HH24
Matched ELISA Pair:	TA700097
Protein Families:	Druggable Genome, Secreted Protein
Protein Pathways:	GnRH signaling pathway, Neuroactive ligand-receptor interaction

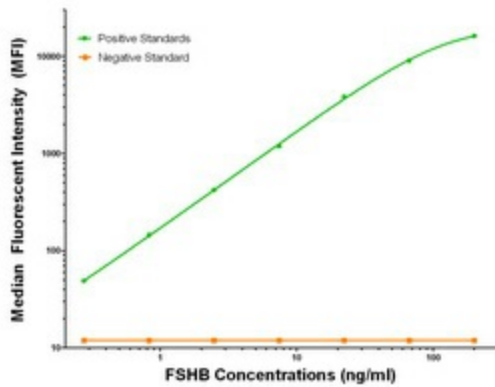


[View online »](#)

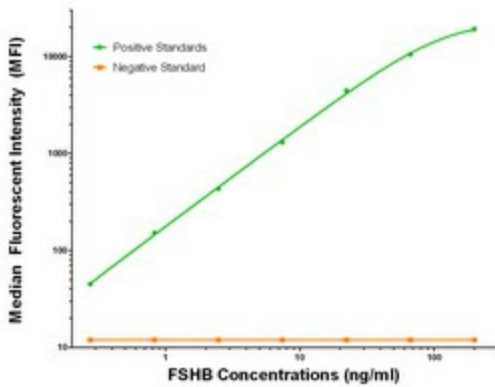
Product images:



FSHB ELISA with 1B2 Capture (TA600094) and 4E10 Detection ([TA700097]) Antibodies. Substrate used: Recombinant Human FSHB ([TP322666])



FSHB Luminex with 1B2 Capture (TA600094) and 4E10 Detection ([TA700097]) Antibodies. Substrate used: Recombinant Human FSHB ([TP322666])



FSHB Luminex with 1B2 Capture (TA600094) and 4E8 Detection ([TA700133]) Antibodies. Substrate used: Recombinant Human FSHB ([TP322666])