

Product datasheet for **TA600081**

Bestrophin 3 (BEST3) Mouse Monoclonal Capture Antibody [Clone ID: OTI1B6]

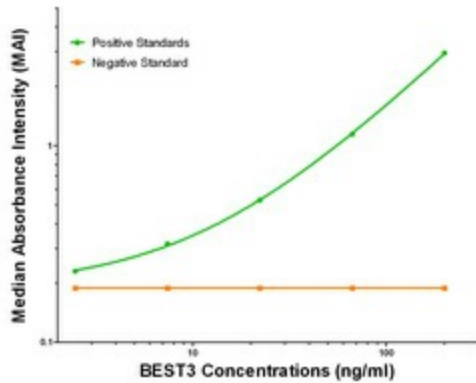
Product data:

Product Type:	Primary Antibodies
Clone Name:	OTI1B6
Applications:	ELISA, LMNX
Recommended Dilution:	1:100 - 1:1000
Reactivity:	Human, Mouse, Rat
Host:	Mouse
Isotype:	IgG1
Clonality:	Monoclonal
Immunogen:	Full length human recombinant protein of human AIPL1 (NP_689652) produced in HEK293T cell.
Formulation:	Stored in PBS (pH 7.4) containing 0.05% sodium azide and up to 5% trehalose
Concentration:	0.5 mg/ml
Conjugation:	Unconjugated
Storage:	Store at -20°C. Avoid repeat freeze/thaw cycles.
Stability:	Stable for 12 months from date of receipt.
Gene Name:	bestrophin 3
Database Link:	NP_689652 Entrez Gene 144453 Human Q8N1M1
Synonyms:	VMD2L3
Matched ELISA Pair:	TA700082, TA700081, TA700132
Protein Families:	Ion Channels: Other, Transmembrane

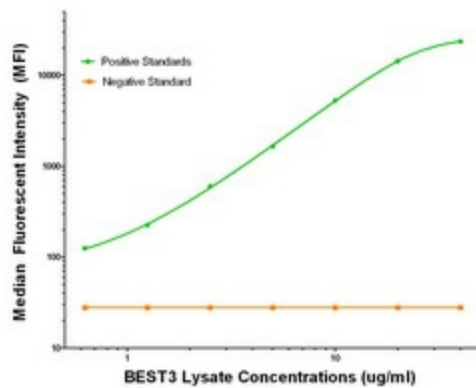


[View online »](#)

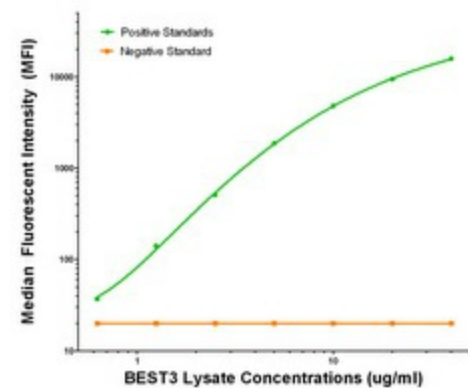
Product images:



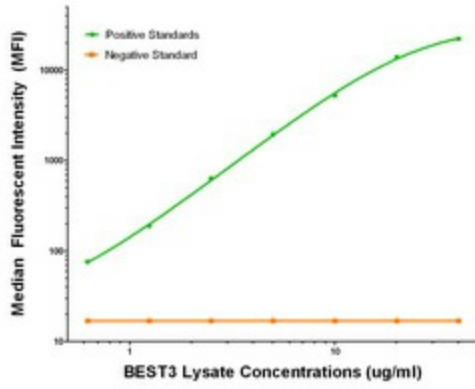
BEST3 ELISA with 1B6 Capture (TA600081) and 2H3 Detection ([TA700082]) Antibodies. Substrate used: Recombinant Human BEST3 ([TP318436])



BEST3 Luminex with 1B6 Capture (TA600081) and 3B11 Detection ([TA700081]) Antibodies. Substrate used: Recombinant Human BEST3 ([TP318436])



BEST3 Luminex with 1B6 Capture (TA600081) and 2H3 Detection ([TA700082]) Antibodies. Substrate used: Recombinant Human BEST3 ([TP318436])



BEST3 Luminex with 1B6 Capture (TA600081) and 3D7 Detection ([TA700132]) Antibodies. Substrate used: Recombinant Human BEST3 ([TP318436])